



**ECUADOR DRILLING RIGS \***

**MAY 6th., 2024**

OPERATOR	WELL NAME	CONTRACTOR	RIG No.	TYPE OF EQUIPMENT	COMMENTS
ANDES PETROLEUM	FANNY 18B192	CCDC	25	ZJ70DB - 2000 HP	RIGGING UP
CONSORCIO FRONTERA GEOPARK BLOQUE PERICO	PERICO CENTRO C2	TUSCANY DRILLING	<u>119</u>	HELI RIG 2000 HP	RUNNING FISHING ASSY
ENAP SIPEC	MDC 71	TUSCANY DRILLING	<u>117</u>	HELI RIG 2000 HP	DRILLING 16" HOLE SECTION
ENAP SIPEC	INCHI E19	IES Ecuador (KCA DEUTAG FORMER PETREX)	<u>T-624 (FORMER PETREX 5824)</u>	NATIONAL 1320 (HELI RIG)	DRILLING 12 1/4" HOLE SECTION
GRAN TIERRA ENERGY	ARAWANA 1	PATTERSON-UTI INTERNATIONAL	301	DSI SCR 1500 HP	DRILLING
PCR ENERGY	ARAZA NORTE (ANE 03)	CCDC	CCDC 036	ZJ70D -2000 HP	CORING OPERATIONS
EP PETROECUADOR (** see comment)	SACHA AQ604 (SCHAQ 604)	SINOPEC	129	ZJ70/4500D - 2000 HP	COMPLETION
EP PETROECUADOR (** see comment)	SACHA AR500 (SCHAR 504)	SINOPEC	156	ZJ70/4500D 2000 HP	PERFORMING WO PREVIOUS TO SKID TO DRILL SCHAR 504
EP PETROECUADOR (** see comment)	GACELA H012 (GCLH 012)	SINOPEC	191	ZJ70D/4500D50 - 2000 HP	DRILLING 12 1/4" HOLE SECTION
EP PETROECUADOR (** see comment)	PUCUNA 028 (PCN 028)	SINOPEC	248	ZJ70DB - 2000 HP	COMPLETION
EP PETROECUADOR (** see comment)	PALMERAS NORTE A17 (PLNA 017)	IES Ecuador (KCA DEUTAG FORMER PETREX)	<u>T - 420 FORMER PETREX 20</u>	HELI NATIONAL 1320 UE 2000 HP	DRILLING 16" HOLE SECTION
EP PETROECUADOR <sup>1</sup> (** see comment)	SHUSHUFINDI H120 (SHSH 120)	RMS (Former SLR, SCHLUMBERGER) ***	RPT - 402	MAVERICK T 1000 (2000 HP)	DRILLING
EP PETROECUADOR <sup>2</sup> (** see comment)	YULEBRA D043H (YLB D O43H)	RMS (Former SLR, SCHLUMBERGER) ***	<u>RPT - 401</u>	MAVERICK T 1000 (2000 HP)	COMPLETION
EP PETROECUADOR <sup>3</sup> (**see comment)	PARAHUACU H036 (PRHH 036)	CCDC	CCDC 037	ZJ70DB - 2000 HP	MOBILIZING RIG FROM PARAHUACU A PAD TO PR

\*\* EP PETROAMAZONAS WHICH MANAGED UPSTREAM OPERATIONS (EXPLORATION /PRODUCTION) WAS INTEGRATED SINCE 01/01/21 TO EP PETROECUADOR <https://www.eppetroecuador.ec/>

1.- To supply services in this area, Consorcio Shushufindi has signed a Contract with Petroamazonas (contrato de Campos Maduros)

2.- To supply services in this area, SHAYA ECUADOR S.A. has signed a contract with Petroamazonas

3.- To supply services in this area, CNPC has signed a contract with Petroamazonas. (Campos Menores)

**STACKED DRILLING RIGS**

CONTRACTOR	RIG No:	TYPE OF EQUIPMENT	COMMENTS
CCDC	CCDC 028	ZJ70D -2000 HP	MAINTENANCE IN SHPINGO PREVIOUS TO DEMOBILIZE TO COCA
CCDC	CCDC 039	ZJ50DB -1500 HP	COCA BASE
CCDC	CCDC 066	ZJ70D -2000 HP	COCA BASE
CCDC	CCDC 069	ZJ70DB - 2000 HP	COCA BASE
HILONG	<u>HL 15</u>	ZJ70D 2000 HP	COCA BASE
SINOPEC	119	ZJ70/4500D - 2000 HP	COCA BASE
SINOPEC	127	ZJ70D - 2000 HP	COCA BASE
SINOPEC	168	ZJ70DB - 2000 HP	YURALPA G PAD (WAYRA ENERGY OPERATIONS AREA IN PETROECUADOR FIELD)
SINOPEC	183	ZJ70DB - 2000 HP	COCA BASE
SINOPEC	185	ZJ70DB - 2000 HP	COCA BASE
SINOPEC	219	ZJ70DB - 2000 HP	COCA BASE, THIS RIG WOULD BE MOBILIZED TO DRILL IN PAKA NORTE B (BLOCK 15, PETROECUADOR FIELD)
SINOPEC	220	ZJ70/4500D92 - 2000 HP	COCA BASE
TRIBLOILGAS	<u>202</u>	SERVICE KING 1000 HP	VINITA PAD. MAINTENANCE

\*\*\* Rig Management Systems (RMS)

\*Jorge Rosas [jrosasw1992@hotmail.com](mailto:jrosasw1992@hotmail.com) +593 9 87200446



ECUADOR WORKOVER RIGS \*

MAY 6th., 2024

OPERATOR	WELL NAME	CONTRACTOR	RIG No.	TYPE OF EQUIPMENT	
ANDES PETROLEUM	JOHANNA ESTE 72	HILONG	HL - 3	DFXK JC11/21 650HP	W.O.
PETROORIENTAL	TAPIR NORTE 25	CCDC	51	X J650 - 650 HP	W.O.
ENAP-SIPEC	MDC 17	ORIENDRILL	901	LOADCRAFT 650	W.O.
PCR ENERGY	VHR SUR 02	ORIENDRILL	902	LOADCRAFT 650	W.O.
EP PETROECUADOR (** see comment)	VICTOR HUGO RUALES J020 (VHRJ 020)	DRILLCOTEC	20	FRANKS 600	W.O.
EP PETROECUADOR (** see comment)	AGUARICO H033 (AGRH 033)	DOWN HOLE TOOLS (DHT)	DT10	XJ650- 650 HP	W.O.
EP PETROECUADOR (** see comment)	SHUSHUFINDI E096H (SHSE 096H)	FAST DRILLING	FD 11	XJ 650 (700 HP)	W.O.
EP PETROECUADOR (** see comment)	NENKE B007 (NNKB 007)	HILONG	HL - 28	DFXK JC11/21 650HP	W.O.
EP PETROECUADOR (** see comment)	SACHA APO 484 (SCHAP 484)	TRIBOILGAS	101	550 HP	W.O.
EP PETROECUADOR (** see comment)	LAGO AGRIO 009 (LGA 009)	TRIBOILGAS	102	550 HP	W.O.
EP PETROECUADOR (** see comment)	SACHA AF385 (SCHAF 385)	TRIBOILGAS	103	LCT 550 HP	W.O.
EP PETROECUADOR (** see comment)	YURALPA CENTRO A009 (YRCA 009)	TRIBOILGAS	104	LOADCRAFT 550	W.O.
EP PETROECUADOR (** see comment)	EDEN YUTURI A055 (EDYA 055)	TRIBOILGAS	106	SERVICES KING 550 HP	W.O.
EP PETROECUADOR (** see comment)	ISHPINGO B041 (ISHB 041)	TRIBOILGAS	107	LOADCRAFT 550 HP	W.O.
EP PETROECUADOR (** see comment)	YANAQUINCHA ESTE A029 (YNEA 029)	TRIBOILGAS	201	DRILLING SERVICE KING 1000HP	W.O.
EP PETROECUADOR (** see comment)	SACHA AN 460 (SCHAN 460)	TRIBOILGAS	203	SERVICE KING 1000 HP	W.O.
EP PETROECUADOR (** see comment)	SACHA AL 440 (SCHAL 440)	TRIBOILGAS	204	SERVICE KING 1000 HP	W.O.
EP PETROECUADOR (** see comment)	CHONTA SUR A0014 (CHSA 014)	ORIENDRILL	903	LOADCRAFT 650	W.O.
EP PETROECUADOR (** see comment)	AUCA K132 (ACAK 132)	TUSCANY DRILLING	111	CARE 665 HP	W.O.
EP PETROECUADOR (** see comment)	AUCA E082 (ACAE 082)	SINOPEC	932	XJ 650 - 650 HP	W.O.
EP PETROECUADOR (** see comment)	SHUSHUFINDI 1272 (SHSI 272)	SINOPEC	903	XJ 650 - 650 HP	W.O.
EP PETROECUADOR (** see comment)	SHUSHUFINDI V157 (SHSV 157)	SINOPEC	904	ZJ30 - 750 HP	W.O.
EP PETROECUADOR (** see comment)	SHUSHUQUI 10 (SHH 010)	TUSCANY DRILLING	104	CARE 550 HP	W.O.
EP PETROECUADOR (** see comment)	YANQUINCHA ESTE B011 (YNEB 011)	GEOPETSA	6	ZPEC 650	W.O.
EP PETROAMAZONAS (** see comment)	LAGO AGRIO J062 (LGAJ 062)	GEOPETSA	5	LTO-550-VIN-26606	W.O.

\*\* EP PETROAMAZONAS WHICH MANAGED UPSTREAM OPERATIONS (EXPLORATION / PRODUCTION) WAS INTEGRATED SINCE 01/01/21 TO EP PETROECUADOR <https://www.epetroecuador.ec/>

1.- To supply services in this area, SHAYA ECUADOR S.A. has signed a contract with Petroamazonas

2.- To supply services in this area, Consorcio Shushufindi has signed a Contract with Petroamazonas (contrato de Campos Maduros)

3.- To supply services in this area, Consorcio Pardalis has signed a Contract with Petroamazonas (contrato de Campos Maduros)

4.- To supply services in this area, Consorcio PAÑATURI has signed a contract with Petroamazonas (Contrato de campos Maduros)

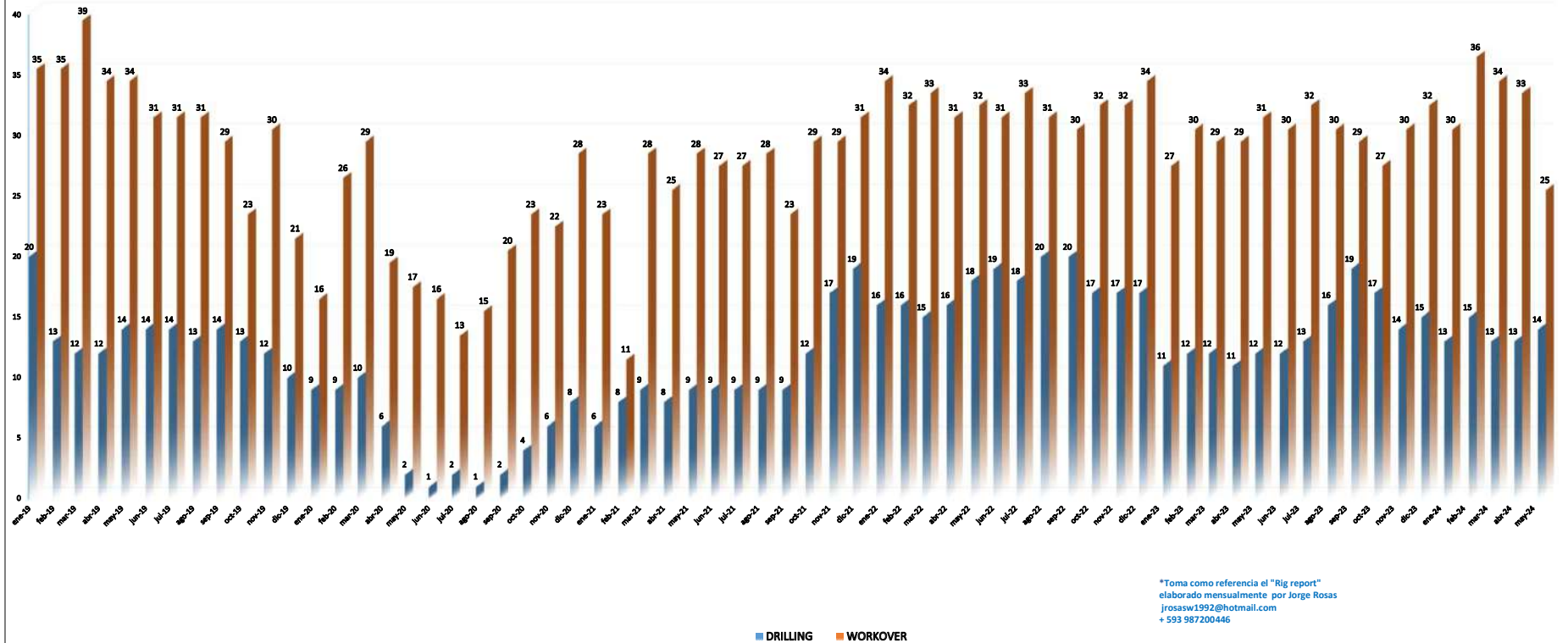
5.- To supply services in this area, Consorcio IGAPQ has signed a contract with Petroamazonas (contrato de campos Maduros)

STACKED WORKOVER RIGS

CONTRACTOR	RIG No.	TYPE OF EQUIPMENT	STACKED
CCDC	CCDC 40	ZJ20 - 650 HP	COCA BASE
CCDC	CCDC 41	XJ550 - 650 HP	COCA BASE
CCDC	CCDC 42	XJ550 - 550 HP	COCA BASE
CCDC	CCDC 52	Z J - 650 HP	LAGO AGRIO BASE
DYGOIL	30	CAMERON 600	SHUSHUFINDI (MAINTENANCE).
EDS PETROLEUM	EDS-CHA04	NOV 5C 550 HP	JVINO VERDE BASE
ESPINEL & ASOCIADOS	EA - 12	XJ650	COCA BASE. INSPECTION/MAINTENANCE
GEOPETSA	3	WILSON 42B 500	COCA BASE
GEOPETSA	4	UPET 550 HP	COCA BASE
GEOPETSA	7	KING SERVICES 750HP	COCA BASE
HILONG	HL - 18	DFXK JC11/21 650HP	DEMobilizing FROM BLOCK 16 (PETROECUADOR AREA)
LOXODONTA	ELEFANTE 01	CORSAIR 475 HP (CRANE CARRIER COMPANY)	COCA BASE
OCIPAG (THIS RIG WAS BEFORE RIG VICTORIA 01, OWNED BY NORDRILCO)	OCIPAG 01	NATIONAL OILWELL VARCO NOV 550 HP	LAGO AGRIO
NORDRILCO (NORWEGIAN DRILLING COMPANY)	VICTORIA 01	NATIONAL OILWELL VARCO NOV 550 HP	COCA BASE
NORDRILCO (NORWEGIAN DRILLING COMPANY)	VICTORIA 02	SJ PETRO MODELO XJ550	COCA BASE
NORDRILCO (NORWEGIAN DRILLING COMPANY)	VICTORIA 03	SJ PETROLEUM MACHINERY 750 HP MODELO ZJ30	COCA BASE
NORDRILCO (NORWEGIAN DRILLING COMPANY)	VICTORIA 04	SJ PETROLEUM MACHINERY 650 HP MODELO SJX5540 TX850	COCA BASE
ORIENDRILL	904	XJ 650 - 650 HP	SACHA BASE
ORIENDRILL	905	XJ 650 - 650 HP	SACHA BASE
PETROELF S.A.	6357	FRANKS 650 HP	COCA BASE
PLUSPETROL ECUADOR B.V.	PPE 01	OIME 750SL	STBY. VILLANO "A" PAD
PLUSPETROL ECUADOR B.V.	PPE 02	OIME 500	STBY. VILLANO "B" PAD
PSS WORKOVER S.A.	PSS 815	IRI 2042 / FRANKS 600	COCA BASE
PSS WORKOVER S.A.	PSS 816	HEARTLAND RIG INTERNATIONAL (HRI) 750 HP	COCA BASE
SINOPEC	905	ZJ30 - 750 HP	MAINTENANCE
SINOPEC	907	XJ 550 - 550 HP	COCA BASE
SINOPEC	908	XJ 650 - 650 HP	COCA BASE
TRIBOILGAS	5	LTO-550-VIN-26606	COCA BASE
TRIBOILGAS	6	COOPER 550	COCA BASE
TRIBOILGAS	105	CROWN 550 HP	COCA BASE
TRIBOILGAS	106	SERVICES KING 550 HP	COCA BASE
TRIBOILGAS	108	COOPER 550SD	COCA BASE
TRIBOILGAS	109	LANCO 550 HP	TAMBILLO (QUITO), PREPARRING RIG
TRIBOILGAS	110	LANCO 550 HP	TAMBILLO (QUITO), PREPARRING RIG
TRIBOILGAS	205	SERVICE KING 1000 HP	TAMBILLO (QUITO)
TRIBOILGAS	206	SERVICE KING 775 HP	COCA BASE
TUSCANY DRILLING	105	CARE 650 HP	COCA BASE

\*Jorge Rosas jrosasw1992@hotmail.com +593 9 87200446

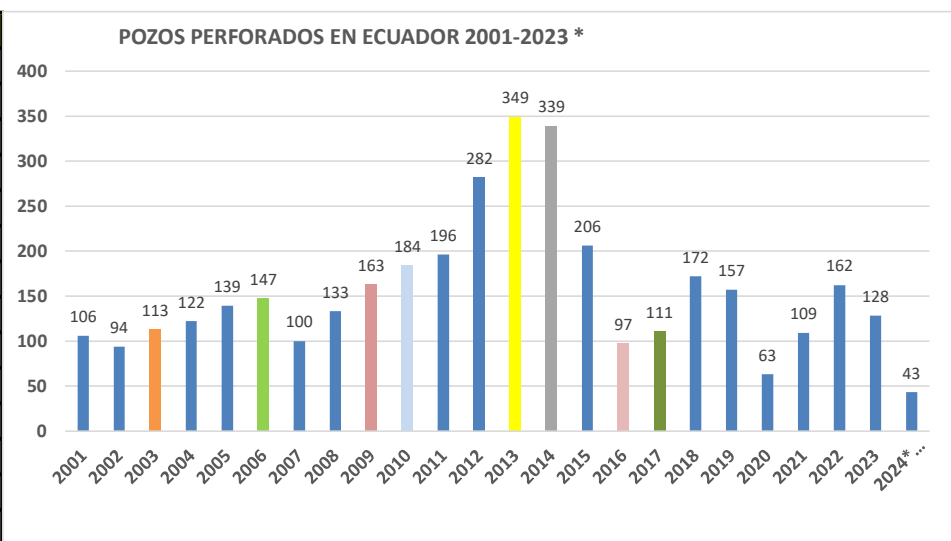
### REFERENCIA HISTORICA DEL NIVEL DE RIGS EN ACTIVIDAD EN ECUADOR \*



\*Toma como referencia el "Rig report" elaborado mensualmente por Jorge Rosas  
 jrosasw1992@hotmail.com  
 + 593 987200446

## POZOS PERFORADOS EN ECUADOR 2001 - 2024 \*

AÑO	POZOS PERFORADOS
2001	106
2002	94
2003	113
2004	122
2005	139
2006	147
2007	100
2008	133
2009	163
2010	184
2011	196
2012	282
2013	349
2014	339
2015	206
2016	97
2017	111
2018	172
2019	157
2020	63
2021	109
2022	162
2023	128
<b>2024* (Hasta Mayo 12 /2024)</b>	<b>43</b>



Elaborado por:

Jorge Rosas [jrosasw1992@hotmail.com](mailto:jrosasw1992@hotmail.com)

Cel: + 593 9 8 7200446

\* Este cuadro está basado en información recolectada a través de las distintas compañías de servicio y operadoras, así como de los organismos gubernamentales respectivos. En cada año se consideran solo los pozos que hayan culminado el evento de perforación en ese período.

*Recordamos que se hacen todos los esfuerzos para que la información sea lo más fidedigna posible, sin embargo, no podemos garantizar su infalibilidad. También deslindamos responsabilidad del uso posterior que se haga a esta recopilación de información.*



No.	OPERADORA	POZOS	BLOQUE	CONFIGURACION DEL POZO	CLASIFICACION	PROFUNDIDAD TOTAL (M/DIV)	FECHA INICIO (DD-MM-AAAA)	FECHA LLEGADA (DD-MM-AAAA)	RIG	DIRECCIONAL	LODOS	SOLIDS CONTROL & WATER MANAGEMENT	BROCAS	MUDLOGGING	CEMENTACION	CORRIDA DE CASING	MARTILLOS	LINER HANGER	REGISTROS OPEN HOLE	CABEZALES	CONTRATANTE DE SERVICIOS DE LOGGING	CONTRATANTE DE SERVICIOS DE MUDLOGGING	CONTRATANTE DE SERVICIOS DE CEMENTACION
54	EP PETROEQUADOR*	PAKA NORTE 8029 (PKNB 019)	15	TIPO S	DEBARROLLO				SINOPEC 219	SLB	SINOPEC	SINOPEC	ULTERRA	EULOG	SLB	SINOPEC (CASINO TEAM)	FAT	TIW (D&Q4p)	SLB (LWD)	ENG/HEI/ROL			
55	EP PETROEQUADOR*	PARAHUACU 8636 (PRH036)	57	TIPO J	DEBARROLLO		12-06-24		CCDC 3F	SLB	CCDC	CCDC	SLB	CCDC	CCDC	MISSION PETROLEUM	SLB	TIW (D&Q4p)	SLB (LWD)	MISSION PETROLEUM			
<p>1. Para suministrar servicios en esta área, SHAYA ECUADOR S.A. ha firmado un contrato con Petroamazonas EP</p> <p>2. Para suministrar servicios en esta área, Concesionarios SINOPEC/EP ha firmado un contrato con Petroamazonas EP</p> <p>3. Para suministrar servicios en esta área (Bilanca - Yimba), TROBILGAS ha firmado un contrato con Petroamazonas EP</p> <p>4. Para suministrar servicios en esta área, WAYRA ENERGY ha firmado un contrato con Petroamazonas EP</p> <p>5. Para suministrar servicios en esta área, CNPC ha firmado un contrato con Petroamazonas EP. (Campos Menores)</p>																							