



**ECUADOR DRILLING RIGS \***

APRIL 5th., 2024

OPERATOR	WELL NAME	CONTRACTOR	RIG No.	TYPE OF EQUIPMENT	COMMENTS
ANDES PETROLEUM	FANNY 18B190	CCDC	25	ZJ70DB - 2000 HP	DRILLING 12 1/4" HOLE SECTION
CONSORCIO FRONTERA GEOPARK BLOQUE PERICO	PERICO CENTRO C2	TUSCANY DRILLING	119	HELI RIG 2000 HP	MOBILIZING FROM PERICO NORTE
ENAP SIPEC	MDC 70	TUSCANY DRILLING	117	HELI RIG 2000 HP	DRILLING
ENAP SIPEC	INCHI E22	IES Ecuador (KCA DEUTAG FORMER PETREX)	T-624 (FORMER PETREX 5824)	NATIONAL 1320 (HELI RIG)	DRILLING
GRAN TIERRA ENERGY	ARAWANA 1	PATTERSON-UTI INTERNATIONAL	301	DSI SCR 1500 HP	MOBILIZING FROM COLOMBIA
PCR ENERGY	ARAZA NORESTE A1	CCDC	CCDC 036	ZJ70D -2000 HP	DRILLING
EP PETROECUADOR (** see comment)	SACHA AQ 605 (SCHAR 605)	SINOPEC	129	ZJ70/4500D - 2000 HP	COMPLETION
EP PETROECUADOR (** see comment)	SACHA AR508 (SCHAR 508)	SINOPEC	156	ZJ70/4500D 2000 HP	COMPLETION
EP PETROECUADOR (** see comment)	GACELA H011 (GCLH 011)	SINOPEC	191	ZJ70D/4500D50 - 2000 HP	POOH 7" LINER HANGER SETTING TOOL
EP PETROECUADOR (** see comment)	PUCUNA 028 (PCN 028)	SINOPEC	248	ZJ70DB - 2000 HP	DRILLING 12 1/4" HOLE SECTION
EP PETROECUADOR (** see comment)	PALMERAS NORTE A016 (PLNA 016)	IES Ecuador (KCA DEUTAG FORMER PETREX)	T - 420 FORMER PETREX 20	HELI NATIONAL 1320 UE 2000 HP	CEMENTING 13 3/8" CASING
EP PETROECUADOR <sup>1</sup> (** see comment)	SHUSHUFINDI H148 (SHSH 148)	RMS (Former SLR, SCHLUMBERGER) ***	RPT - 402	MAVERICK T 1000 (2000 HP)	COMPLETION
EP PETROECUADOR <sup>2</sup> (** see comment)	YULEBRA D043H /YLBD 043H)	RMS (Former SLR, SCHLUMBERGER) ***	RPT - 401	MAVERICK T 1000 (2000 HP)	RUNNING CLEANOUT BHA PREVIOUS TO RUN LOGGING
** EP PETROAMAZONAS WHICH MANAGED UPSTREAM OPERATIONS (EXPLORATION /PRODUCTION) WAS INTEGRATED SINCE 01/01/21 TO EP PETROECUADOR <a href="https://www.eppetroecuador.ec/">https://www.eppetroecuador.ec/</a>					
1.- To supply services in this area, Consorcio Shushufindi has signed a Contract with Petroamazonas (contrato de Campos Maduros)					
2.- To supply services in this area, SHAYA ECUADOR S.A. has signed a contract with Petroamazonas					
STACKED DRILLING RIGS					
CONTRACTOR		RIG No:		TYPE OF EQUIPMENT	COMMENTS
CCDC		CCDC 028		ZJ70D -2000 HP	MAINTENANCE IN SHPINGO PREVIOUS TO DEMOBILIZE TO COCA
CCDC		CCDC 037		ZJ70DB - 2000 HP	PERFORMING A SPECIFIC WORKOVER JOB DUE TO PULLING CAPACITY REQUIREMENTS. IT'S REFERRED IN WO RIGS SECTION
CCDC		CCDC 039		ZJ50DB -1500 HP	COCA BASE
CCDC		CCDC 066		ZJ70D -2000 HP	COCA BASE
CCDC		CCDC 069		ZJ70DB - 2000 HP	COCA BASE
HILONG		HL 15		ZJ70D 2000 HP	COCA BASE
SINOPEC		119		ZJ70/4500D - 2000 HP	COCA BASE
SINOPEC		127		ZJ70D - 2000 HP	COCA BASE
SINOPEC		168		ZJ70DB - 2000 HP	YURALPA G PAD (WAYRA ENERGY OPERATIONS AREA IN PETROECUADOR FIELD)
SINOPEC		183		ZJ70DB - 2000 HP	COCA BASE
SINOPEC		185		ZJ70DB - 2000 HP	COCA BASE
SINOPEC		219		ZJ70DB - 2000 HP	COCA BASE
SINOPEC		220		ZJ70/4500D92 - 2000 HP	COCA BASE
TRIBLOILGAS		202		SERVICE KING 1000 HP	VINITA PAD. MAINTENANCE

\*\*\* Rig Management Systems (RMS)

\*Jorge Rosas [jrosasw1992@hotmail.com](mailto:jrosasw1992@hotmail.com) +593 9 87200446

**ECUADOR WORKOVER RIGS \***

APRIL 5th., 2024

OPERATOR	WELL NAME	CONTRACTOR	RIG No.	TYPE OF EQUIPMENT	INITIAL COMPLETION
ANDES PETROLEUM	JOHANNA ESTE 73	HILONG	HL - 3	DFXK JC11/21 650HP	
PETROLIENTAL	NANTU 17	LOXODONTA	ELEFANTE 01	CORSAR 475 HP (CRANE CARRIER COMPANY)	MOBILIZING FROM TARAPOA AREA
PETROLIENTAL	PAICHE 03	CCDC	51	X J650 - 650 HP	W.O.
ENAP SIPEC	MDC 17	ORIENDRILL	901	LOADCRAFT 650	W.O.
ENAP SIPEC	INGCHI A5	TUSCANY DRILLING	105	CARE 650 HP	W.O.
ORION ENERGY	RON 003	GEOPETSA	Z	KING SERVICES 750HP	W.O.
PCR ENERGY	VHR SUR 01	ORIENDRILL	902	LOADCRAFT 650	INITIAL COMPLETION
EP PETROECUADOR (** see comment)	SHUSHUFINDI L226 (SHSL 226)	CCDC	40	ZJ20 - 650 HP	W.O.
EP PETROECUADOR (** see comment)	SHUSHUFINDI T233 (SHST 233)	CCDC	42	XJ550 - 550 HP	W.O.
EP PETROECUADOR (** see comment)	PALO AZUL 040 (PLAC 040)	CCDC	52	Z J - 650 HP	W.O.
EP PETROECUADOR (** see comment)	CUYABENO C075 (CYBC 075)	DRILLCOTEC RIG DYGOIL	20	FRANKS 600	W.O.
EP PETROECUADOR (** see comment)	SECOYA C053 (SCYC 053)	DOWN HOLE TOOLS (DHT)	DT10	XJ650- 650 HP	W.O.
EP PETROECUADOR (** see comment)	SHUSHUFINDI AC228 (SHSAC 228)	FAST DRILLING	FD 11	XJ 650 (700 HP)	W.O.
EP PETROECUADOR (** see comment)	NENKE B002 (NNKB 002)	HILONG	HL - 28	DFXK JC11/21 650HP	W.O.
EP PETROECUADOR (** see comment)	SACHA AJ423 (SCHAJ 423)	TRIBOILGAS	101	550 HP	W.O.
EP PETROECUADOR (** see comment)	GUANTA 040 (GNT 040)	TRIBOILGAS	102	550 HP	W.O.
EP PETROECUADOR (** see comment)	SACHA AL448 (SCHAL 448)	TRIBOILGAS	103	LCT 550 HP	W.O.
EP PETROECUADOR (** see comment)	PAYAMINO P023 (PYMP 923)	TRIBOILGAS	104	LOADCRAFT 550	W.O.
EP PETROECUADOR (** see comment)	TUMAKI ESTE A001 (TMEA 001)	TRIBOILGAS	106	SERVICES KING 550 HP	W.O.
EP PETROECUADOR (** see comment)	ISHPINGO B058 (ISHB 058)	TRIBOILGAS	107	LOADCRAFT 550 HP	W.O.
EP PETROECUADOR (** see comment)	YANAQUINCHA OESTE B010 (YNOB 010)	TRIBOILGAS	201	DRILLING SERVICE KING 1000HP	W.O.
EP PETROECUADOR (** see comment)	SACHA 0472 (SCHAO 472)	TRIBOILGAS	203	SERVICE KING 1000 HP	W.O.
EP PETROECUADOR (** see comment)	SACHA S263 (SCHAS 263)	TRIBOILGAS	204	SERVICE KING 1000 HP	W.O.
EP PETROECUADOR (** see comment)	YUCA C024 (YCAC 024)	ORIENDRILL	903	LOADCRAFT 650	W.O.
EP PETROECUADOR (** see comment)	AUCA K247 (ACAK 247)	TUSCANY DRILLING	111	CARE 665 HP	W.O.
EP PETROECUADOR (** see comment)	AUCA D028 (ACAD 028)	SINOPEC	932	XJ 650 - 650 HP	W.O.
EP PETROECUADOR (** see comment)	SHUSHUFINDI 011 (SHS 011)	SINOPEC	903	XJ 650 - 650 HP	W.O.
EP PETROECUADOR (** see comment)	SHUSHUFINDI 070 (SHS 070)	SINOPEC	904	ZJ30 - 750 HP	W.O.
EP PETROECUADOR (** see comment)	SHUARA B033 (SHAB033)	TUSCANY DRILLING	104	CARE 550 HP	W.O.
EP PETROECUADOR (** see comment)	YANAQUINCHA ESTE A030 (YNEA 030)	SINOPEC	905	ZJ30 - 750 HP	W.O.
EP PETROAMAZONAS (** see comment)	VICTOR HUGO RUALES 008 (VHR 008)	GEOPETSA	5	LTO-550-VN-26606	W.O.
EP PETROECUADOR (** see comment)	PARAHUACU A033 (PRHA 033)	CCDC	37	ZJ700B - 2000 HP*	*IT IS A DRILLING RIG USED ONLY FOR A SPECIFIC WORKOVER REQUIREMENT NOT BEYOND THE RIG'S CAPABILITY
EP PETROECUADOR 7 (** see comment)	ARMADILLOB003 (ARMB 003)	GEOPETSA	6	ZPEC 650	W.O.

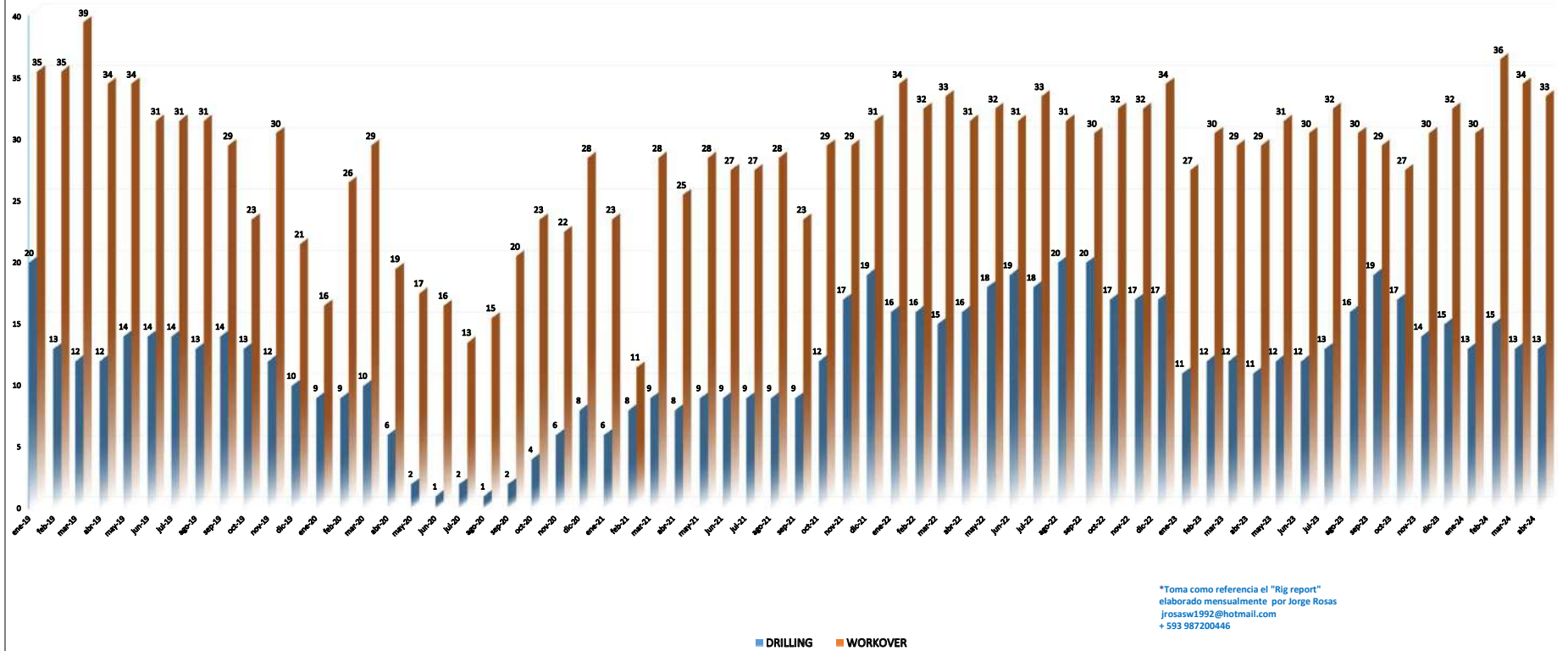
\*\* EP PETROAMAZONAS WHICH MANAGED UPSTREAM OPERATIONS (EXPLORATION / PRODUCTION) WAS INTEGRATED SINCE 01/01/21 TO EP PETROECUADOR <https://www.epetroecuador.ec/>

- 1.- To supply services in this area, SHAYA ECUADOR S.A. has signed a contract with Petroamazonas
- 2.- To supply services in this area, Consorcio Shushufindi has signed a Contract with Petroamazonas (contrato de Campos Maduros)
- 3.- To supply services in this area, Consorcio Pardalis has signed a Contract with Petroamazonas (contrato de Campos Maduros)
- 4.- To supply services in this area, Consorcio PAÑATURI has signed a contract with Petroamazonas (Contrato de campos Maduros)
- 5.- To supply services in this area, Consorcio IGAP0 has signed a contract with Petroamazonas (contrato de campos Maduros)
- 6.- To supply services in this area, CNPC has signed a contract with Petroamazonas (Campos Menores)
- 7.- To supply services in this area, ECUASERVOIL, has signed a contract with Petroamazonas

**STACKED WORKOVER RIGS**

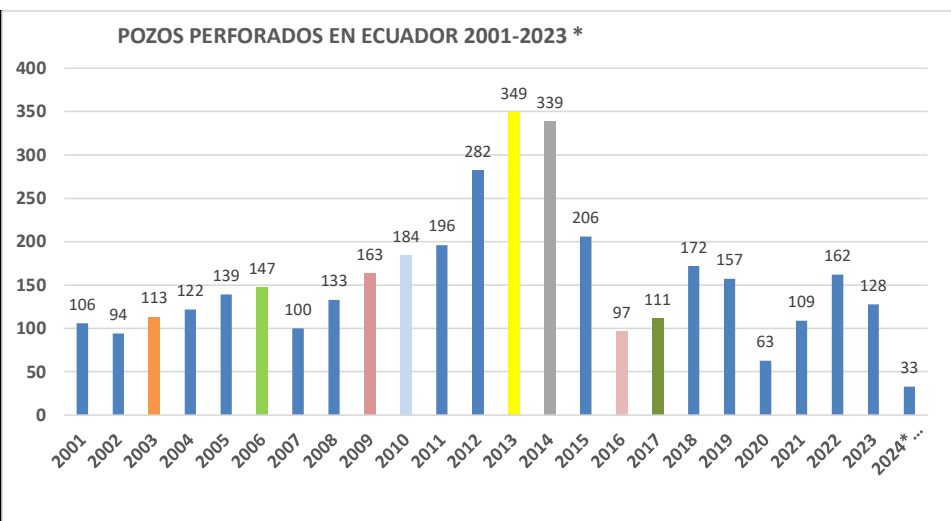
CONTRACTOR	RIG No.	TYPE OF EQUIPMENT	STACKED
CCDC	CCDC 41	XJ550 - 650 HP	COCA BASE
DYGOIL	30	CAMERON 600	SHUSHUFINDI (MAINTENANCE)
EDS PETROLEUM	EDS-CHA04	NOV 5C 550 HP	JIVNO VERDE BASE
ESPINEL & ASOCIADOS	EA - 12	XJ650	COCA BASE. INSPECTION/MAINTENANCE
GEOPETSA	3	WILSON 42B 500	COCA BASE
GEOPETSA	4	UPET 550 HP	COCA BASE
HILONG	HL - 18	DFXK JC11/21 650HP	DEMOLIZING FROM BLOCK 16 (PETROECUADOR AREA)
OCIPAG (THIS RIG WAS BEFORE RIG VICTORIA 01, OWNED BY NORDRILCO)	OCIPAG 01	NATIONAL OILWELL VARCO NOV 550 HP	LAGO AGRIO
NORDRILCO (NORWEGIAN DRILLING COMPANY)	VICTORIA 01	NATIONAL OILWELL VARCO NOV 550 HP	COCA BASE
NORDRILCO (NORWEGIAN DRILLING COMPANY)	VICTORIA 02	SJ PETRO MODELO XJ550	COCA BASE
NORDRILCO (NORWEGIAN DRILLING COMPANY)	VICTORIA 03	SJ PETROLEUM MACHINERY 750 HP MODELO ZJ30	COCA BASE
NORDRILCO (NORWEGIAN DRILLING COMPANY)	VICTORIA 04	SJ PETROLEUM MACHINERY 650 HP MODELO SJX5540 TX650	COCA BASE
ORIENDRILL	904	XJ 650 - 650 HP	SACHA BASE
ORIENDRILL	905	XJ 650 - 650 HP	SACHA BASE
PETROELF S.A.	6357	FRANKS 650 HP	COCA BASE
PLUSPETROL ECUADOR B.V.	PPE 01	OIME 750SL	STBY. VILLANO "A" PAD
PLUSPETROL ECUADOR B.V.	PPE 02	OIME 500	STBY. VILLANO "B" PAD
PSS WORKOVER S.A.	PSS 815	IRI 2042 / FRANKS 600	COCA BASE
PSS WORKOVER S.A.	PSS 816	HEARTLAND RIG INTERNATIONAL (HRL) 700 HP	COCA BASE
SINOPEC	907	XJ 550 - 550 HP	COCA BASE
SINOPEC	908	XJ 650 - 650 HP	COCA BASE
TRIBOILGAS	5	LTO-550-VN-26606	COCA BASE
TRIBOILGAS	6	COOPER 550	COCA BASE
TRIBOILGAS	105	CROWN 550 HP	COCA BASE
TRIBOILGAS	106	SERVICES KING 550 HP	COCA BASE
TRIBOILGAS	108	COOPER 5500D	COCA BASE
TRIBOILGAS	109	LANCO 550 HP	TAMBILLO (QUITO), PREPARING RIG
TRIBOILGAS	110	LANCO 550 HP	TAMBILLO (QUITO), PREPARING RIG
TRIBOILGAS	205	SERVICE KING 1000 HP	TAMBILLO (QUITO)
TRIBOILGAS	206	SERVICE KING 775 HP	COCA BASE

## REFERENCIA HISTORICA DEL NIVEL DE RIGS EN ACTIVIDAD EN ECUADOR \*



## POZOS PERFORADOS EN ECUADOR 2001 - 2024 \*

AÑO	POZOS PERFORADOS
2001	106
2002	94
2003	113
2004	122
2005	139
2006	147
2007	100
2008	133
2009	163
2010	184
2011	196
2012	282
2013	349
2014	339
2015	206
2016	97
2017	111
2018	172
2019	157
2020	63
2021	109
2022	162
2023	128
<b>2024* (Hasta Abril 07 /2024)</b>	<b>33</b>



Elaborado por:

Jorge Rosas [\\_jrosasw1992@hotmail.com](mailto:jrosasw1992@hotmail.com)

Cel: + 593 9 8 7200446

\* Este cuadro está basado en información recolectada a través de las distintas compañías de servicio y operadoras, así como de los organismos gubernamentales respectivos. En cada año se consideran solo los pozos que hayan culminado el evento de perforación en ese período.

*Recordamos que se hacen todos los esfuerzos para que la información sea lo más fidedigna posible, sin embargo, no podemos garantizar su infalibilidad. También deslindamos responsabilidad del uso posterior que se haga a esta recopilación de información.*

**POZOS PERFORADOS EN ECUADOR 2024 (hasta Abril 10) \* Información recopilada por Jorge Rosas W. jrosasw1992@hotmail.com +593 9 87200446**

No.	OPERADORA	POZOS	BLOQUE	CONFIGURACION DEL POZO	CLASIFICACION	PROFUNDIDAD TOTAL (MD/FT)	FECHA INICIO (DD-MM-AAAA)	FECHA LLEGA A PT (DD-MM-AAAA)	RIG	DIRECCIONAL	LOOS	SOLOS CONTROL & WATER MANAGEMENT	BROCAS	MUDLOGGING	CEMENTACION	CORRIERA DE CASING	MARTILLOS	LINER HANGER	REGISTROS OPEN HOLE	CABLES	TIPO DE CASING DE FONDO DEL POZO	TIPO DE CASING DE FONDO DEL POZO	TIPO DE CASING DE FONDO DEL POZO	
1	ANDES PETROLEUM	JOHANNA ESTE 72	62	TIPO J	DESARROLLO	9236 / 8562	08-02-24	17-02-24	CCDC 25	HALL	SLB	ENVI	HALL	ENVI	HALL	MISSION PETROLEUM	SLB	TW (DrillQup)	HALL	MISSION PETROLEUM		BES	BAKER	
2	ANDES PETROLEUM	JOHANNA ESTE 73	62	TIPO J	DESARROLLO	90201 / 8533	18-02-24	29-02-24	CCDC 25	HALL	SLB	ENVI	HALL	ENVI	HALL	MISSION PETROLEUM	SLB	TW (DrillQup)	HALL	MISSION PETROLEUM		BES	BAKER	
3	ANDES PETROLEUM	FANNY 188-187	62	TIPO J	DESARROLLO	9020 / 8937	14-03-24	27-03-24	CCDC 25	ENVI/SLB	CCDC	ENVI	ENVI	ENVI	HALL	TW (DrillQup)	ENVI	TW (DrillQup)	SLB (LWD)	MISSION PETROLEUM				
4	ANDES PETROLEUM	FANNY 188-190	62	TIPO J	DESARROLLO		28-03-24		CCDC 25	ENVI/SLB	CCDC	ENVI	ENVI	ENVI	HALL	MISSION PETROLEUM	ENVI	HALL	SLB (LWD)	MISSION PETROLEUM				
5	ENAP	MDC 65	46	TIPO J	DESARROLLO	10475 / 10093	09-01-24	02-02-24	TUSCANY 117	SLB	SLB	SLB	SLB	PETROLEUM	SLB	EXPRO FORMER FRANK S INTEL	ADRIALPETRO	SLB	SLB (LWD)	MISSION PETROLEUM		BES	SLB	
6	ENAP	MDC 66	46	TIPO J	DESARROLLO	11476 / 10053	12-02-24	04-03-24	TUSCANY 117	SLB	SLB	SLB	SLB	PETROLEUM	SLB	EXPRO FORMER FRANK S INTEL	SLB	SLB	SLB (LWD)	MISSION PETROLEUM		BES	SLB (DN 1750)	
7	ENAP	MDC 70	46	TIPO S	DESARROLLO		31-03-24		TUSCANY 117	SLB	SLB	SLB	SLB	DATALOG	SLB	EXPRO FORMER FRANK S INTEL	SLB	SLB	SLB	MISSION PETROLEUM		BES	SLB (DN 1750)	
8	ENAP	INCHI E17	47	TIPO J MODIFICADA	DESARROLLO	12607 / 10135	07-01-24	29-01-24	ICA T-420 (FORMER PETREX 5024)	HALL	HALL	HALL	HALL	DATALOG	HALL	MISSION PETROLEUM	ADRIALPETRO	HALL	HALL (LWD)	MISSION PETROLEUM		BES	SLB (DN 1750)	
9	ENAP	INCHI E18	47	TIPO J	DESARROLLO	12260 / 10143	12-02-24	04-03-24	ICA T-420 (FORMER PETREX 5024)	HALL	HALL	HALL	HALL	DATALOG	HALL	MISSION PETROLEUM	ADRIALPETRO	HALL	HALL (LWD)	MISSION PETROLEUM		BES	SLB (DN 1750)	
10	ENAP	INCHI E22	47	TIPO J	DESARROLLO	11172 / 10178	15-03-24	07-04-24	ICA T-420 (FORMER PETREX 5024)	HALL	HALL	HALL	HALL	DATALOG	HALL	MISSION PETROLEUM	ADRIALPETRO	HALL	HALL (LWD)	MISSION PETROLEUM		BES	SLB (DN 1750)	
11	CONSORCIO FRONTERA GEOPARK BLOQUE PERICO	PERICO NORTE A5	88	TIPO J	AVANZADA	11550 / 10257	25-01-23	18-02-24	TUSCANY 119	HALL	HALL	HALL	HALL	ENVI LOG	HALL	MISSION PETROLEUM	ADRIALPETRO	SLB	HALL (LWD)	MISSION PETROLEUM		BES	ADRIALPETRO (P35)	
12	CONSORCIO FRONTERA GEOPARK BLOQUE PERICO	PERICO NORTE A6	88	TIPO J	AVANZADA	12212 / 10232	27-02-23	19-03-24	TUSCANY 119	HALL	HALL	HALL	HALL	ENVI LOG	HALL	MISSION PETROLEUM	ADRIALPETRO	BAKER	HALL (LWD)	MISSION PETROLEUM				
13	CONSORCIO FRONTERA GEOPARK BLOQUE PERICO	PERICO CENTRO C2	88	TIPO S	AVANZADA				TUSCANY 119	HALL	HALL	HALL	HALL	ENVI LOG	HALL	MISSION PETROLEUM	ADRIALPETRO	BAKER	HALL (LWD)	MISSION PETROLEUM				
14	GRAN TIERRA ENERGY	ARAWANA 1	51	TIPO S	EXPLORATORIO		07-04-23		PATTERSON 201	SLB	NOV	NOV	NOV	ENVI LOG	SLB	MISSION PETROLEUM	NOV	TW (DrillQup)	SLB	MISSION PETROLEUM				
15	ORION ENERGY	RON 10	54	TIPO J	DESARROLLO	11091 / 9973	01-12-23	10-01-24	SINOPEC 183	SLB	SLB	SLB	SLB	SLB	SLB	MISSION PETROLEUM	SLB	TW (DrillQup)	SLB	MISSION PETROLEUM		BES	SLB (RC 10000)	
16	PCR ENERGY	VHR SUR 02	90	TIPO S	EXPLORATORIO	8370 / 8166	18-12-23	06-01-24	CCDC 36	SLB	SLB	SLB	SLB	ENVI LOG	SLB	TW (DrillQup)	SLB	TW (DrillQup)	SLB	MISSION PETROLEUM				
17	PCR ENERGY	VHR SUR 03 ST1	90	TIPO J EXTENDIDO	EXPLORATORIO	12262 / 8240	06-01-24	02-03-24	CCDC 36	SLB	SLB	SLB	SLB	ENVI LOG	SLB	TW (DrillQup)	SLB	TW (DrillQup)	SLB	MISSION PETROLEUM				
18	PCR ENERGY	ARAZA NORESTE 1	91	TIPO J	EXPLORATORIO		03-04-24		CCDC 36	SLB	SLB	SLB	SLB	ENVI LOG	SLB	TW (DrillQup)	SLB	TW (DrillQup)	SLB	MISSION PETROLEUM				
19	EP PETROECUADOR	ISHPINGO B063 (ISHB063)	43	TIPO J	DESARROLLO	6260 / 8793	31-12-22	19-01-24	CCDC 28	SLB	CCDC	SINOPEC	ULTRERA	PETROLEUM	HALL	SINOPEC (CASING TEAM)	VES SURVEY	TW (DrillQup)	SLB (LWD)	MISSION PETROLEUM		BES	BAKER (FLX 07)	
20	EP PETROECUADOR	ISHPINGO B052 (ISHB052)	43	TIPO J	DESARROLLO		17-09-23	SUSPENSION TEMPORAL DE PERFORACION	CCDC 28	SLB	CCDC	SINOPEC	SLB	ENVI	CCDC	SINOPEC (CASING TEAM)	SLB	TW (DrillQup)	SLB (LWD)	MISSION PETROLEUM		N/A	ABANDONADO	
21	EP PETROECUADOR	ISHPINGO B054 (ISHB 054)	43	TIPO J	DESARROLLO	8490 / 8621	25-12-23	18-01-24	CCDC 28	SLB	CCDC	SINOPEC	SLB	ENVI	CCDC	SINOPEC (CASING TEAM)	SLB	TW (DrillQup)	SLB (LWD)	MISSION PETROLEUM		BES	BAKER (P35)	
22	EP PETROECUADOR	ISHPINGO B024 (ISHB 024)	43	TIPO J	DESARROLLO	7095 / 8626	19-12-23	06-02-24	SINOPEC 185	SLB	SINOPEC	SINOPEC	SLB	PETROLEUM	DRILLTEC	SINOPEC (CASING TEAM)	SLB	TW (DrillQup)	SLB (LWD)	MISSION PETROLEUM		BES	BAKER (F 1000)	
23	EP PETROECUADOR	ISHPINGO B043H (ISHB 043H)	43	HORIZONTAL	DESARROLLO	9300 / 4885	27-12-23	25-01-24	SINOPEC 185	HALL	SINOPEC	SINOPEC	SLB	PETROLEUM	HALL	SINOPEC (CASING TEAM)	SLB	TW (DrillQup)	HALL (LWD)	MISSION PETROLEUM		BES	ADRIALPETRO (WV 3000)	
24	EP PETROECUADOR	GACELA H019 (GCLH 010)	60	TIPO J	DESARROLLO	12751 / 9715	23-01-24	24-02-24	SINOPEC 191	SLB	SINOPEC	SINOPEC	ENVI	ENVI LOG	DRILLTEC	SINOPEC (CASING TEAM)	SLB	HALL	SLB	MISSION PETROLEUM		BES	NOVOMET NR1600 2100H	
25	EP PETROECUADOR	GACELA H011 (GCLH 011)	60	TIPO J	DESARROLLO	12833 / 9703	08-03-24	05-04-24	SINOPEC 191	SLB	SINOPEC	SINOPEC	ENVI	ENVI LOG	DRILLTEC	SINOPEC (CASING TEAM)	SLB	HALL	SLB (LWD)	MISSION PETROLEUM				
26	EP PETROECUADOR	SACHA A190 (SCHA 190)	60	TIPO J REENTRY	DESARROLLO	10407 / 10065	29-12-23	15-01-24	SINOPEC 219	HALL	HALL	HALL	HALL	ENVI LOG	HALL	MISSION PETROLEUM	ADRIALPETRO	HALL	HALL (LWD)	MISSION PETROLEUM		BES	BAKER (E1000 H6 3000)	
27	EP PETROECUADOR	SACHA A068 (SCHA 608)	60	TIPO J	DESARROLLO	11424 / 10079	31-01-24	21-02-24	SINOPEC 219	HALL	HALL	HALL	HALL	ENVI LOG	HALL	MISSION PETROLEUM	ADRIALPETRO	HALL	HALL (LWD)	MISSION PETROLEUM		BES	NOVOMET (NHV400)	
28	EP PETROECUADOR	SACHA AL544 (SCHA 544)	60	TIPO J	DESARROLLO	11268 / 10181	12-01-24	29-01-24	SINOPEC 248	SLB	SINOPEC	SINOPEC	SLB	SINOPEC	SLB	SINOPEC (CASING TEAM)	SLB	HALL	SLB	ENVI/ITRIL	MISSION PETROLEUM		BES	BAKER (FLX 07)
29	EP PETROECUADOR	SACHA AL542 (SCHA 542)	60	TIPO J	DESARROLLO	11752 / 10196	11-02-24	02-03-24	SINOPEC 248	SLB	SINOPEC	SINOPEC	SLB	SINOPEC	SLB	SINOPEC (CASING TEAM)	SLB	HALL	SLB (LWD)	ENVI/ITRIL	MISSION PETROLEUM		BES	BAKER (NF 1750)
30	EP PETROECUADOR	PUCUNA 028 (PCN 028)	60	TIPO J MODIFICADO	DESARROLLO		29-03-24		SINOPEC 248	SLB	SINOPEC	SINOPEC	SLB	SINOPEC	SLB	SINOPEC (CASING TEAM)	SLB	HALL	SLB (LWD)	ENVI/ITRIL	MISSION PETROLEUM			
31	EP PETROECUADOR	SACHA AR500 (SCHAR 500)	60	TIPO J	DESARROLLO	10222 / 10199	01-02-24	28-02-24	SINOPEC 156	SLB	SINOPEC	SINOPEC	SLB	SINOPEC	HALL	SINOPEC (CASING TEAM)	SLB	HALL	SLB	MISSION PETROLEUM		BES	BAKER	
32	EP PETROECUADOR	SACHA AR508 (SCHAR 508)	60	TIPO J	DESARROLLO	10550 / 10176	12-03-24	28-03-24	SINOPEC 156	SLB	SINOPEC	SINOPEC	SLB	SINOPEC	HALL	SINOPEC (CASING TEAM)	SLB	HALL	SLB (LWD)	MISSION PETROLEUM		BES	HALL (DP 2100 1750)	
33	EP PETROECUADOR	SACHA AR501 (SCHAR 501)	60	TIPO J	DESARROLLO		08-04-24		SINOPEC 156	SLB	SINOPEC	SINOPEC	SLB	SINOPEC	HALL	SINOPEC (CASING TEAM)	SLB	HALL	SLB (LWD)	MISSION PETROLEUM				
34	EP PETROECUADOR	SACHA AQ605 (SCHAQ 605)	60	TIPO J	DESARROLLO	10488 / 9997	26-02-24	19-03-24	SINOPEC 129	BAKER	SINOPEC	SINOPEC	ENVI	SINOPEC	CCDC	SINOPEC (CASING TEAM)	SLB	HALL	BAKER (LWD)	ENVI/ITRIL	MISSION PETROLEUM		BES	NOVOMET NR1 400
35	EP PETROECUADOR	SACHA AQ604 (SCHAQ 604)	60	TIPO J	DESARROLLO				SINOPEC 129	BAKER	SINOPEC	SINOPEC	HALL	ENVI LOG	CCDC	SINOPEC (CASING TEAM)	SLB	HALL	BAKER (LWD)	MISSION PETROLEUM				
36	EP PETROECUADOR	WAPONI A002 (WPA 002)	60	TIPO S	EXPLORATORIO	10063 / 9847	14-12-23	13-01-24	ICA T-420 (FORMER PETREX 20)	HALL	HALL	HALL	HALL	ENVI LOG	HALL	TW (DrillQup)	ADRIALPETRO	HALL	HALL	MISSION PETROLEUM				
37	EP PETROECUADOR	PALMERAS NORTE A16 (PLNA 16)	60	TIPO J	EXPLORATORIO		29-03-23		ICA T-420 (FORMER PETREX 20)	HALL	HALL	HALL	HALL	ENVI LOG	HALL	TW (DrillQup)	ADRIALPETRO	HALL	HALL	MISSION PETROLEUM				
38	EP PETROECUADOR	AUCA K18H (ACAK 18H)	61	SLB	HORIZONTAL	13742 / 9714	19-12-23	13-01-24	SLR 801	SLB	SLB	SLB	SLB	SLB	SLB	TW (DrillQup)	SLB	SLB	SLB (LWD)	SLB (CAMERON)		BES	SLB (5000N)	
39	EP PETROECUADOR	AUCA K247 (ACAK 247)	61	TIPO J	DESARROLLO	13860 / 10177	24-01-24	18-02-24	SLR 801	SLB	SLB	SLB	SLB	SLB	SLB	TW (DrillQup)	SLB	TW (DrillQup)	SLB (LWD)	SLB (CAMERON)		BES	SLB	
40	EP PETROECUADOR	YULEBRA D043H (YLB0 043H)	61	HORIZONTAL	DESARROLLO		11-03-24		SLR 801	SLB	SLB	SLB	SLB	SLB	SLB	TW (DrillQup)	SLB	SLB	SLB (LWD)	SLB (CAMERON)		BES	SLB	
41	EP PETROECUADOR	AGUARICO A035 (AGRA035)	57	TIPO J	DESARROLLO	10125 / 9589	06-01-24	20-01-24	SLR 402	SLB	SLB	SLB	SLB	SLB	SLB	EXPRO FORMER FRANK S INTEL	SLB	TW (DrillQup)	SLB (LWD)	SLB (CAMERON)		BES	RC D400NX	
42	EP PETROECUADOR	AGUARICO A041 (AGRA041)	57	TIPO J	DESARROLLO	10165 / 9585	07-02-24	27-02-24	SLR 402	SLB	SLB	SLB	SLB	SLB	SLB	EXPRO FORMER FRANK S INTEL	SLB	TW (DrillQup)	SLB (LWD)	SLB (CAMERON)		BES	SLB (RC 4000)	
43	EP PETROECUADOR	SHUSHUPINDI H48 (SHSH 148)	57	TIPO J HD	DESARROLLO	11530 / 9473	14-03-24	02-04-24	SLR 402	SLB	SLB	SLB	SLB	SLB	SLB	EXPRO FORMER FRANK S INTEL	SLB	NA	SLB (LWD)	SLB (CAMERON)				
44	EP PETROECUADOR	VINITA D038 (VNT0 038)	59	TIPO J MODIFICADO	DESARROLLO	6083 / 7943	07-01-24	24-01-24	TRIBOLOGAS 202	INTEEDID	BAKER	BAKER	ULTRERA	SLB	SLB	TW (DrillQup)	PPP	TW (DrillQup)	SLB	MISSION PETROLEUM		BES	BAKER (FLX 17)	

1. Para suministrar servicios en esta área, SHIVA ECUADOR S.A. ha firmado un contrato con Petroamazonas EP.  
 2. Para suministrar servicios en esta área, Concesionarios SINOPEC ha firmado un contrato con Petroamazonas EP.  
 3. Para suministrar servicios en esta área, Concesionarios SINOPEC ha firmado un contrato con Petroamazonas EP.