



ECUADOR DRILLING RIGS *

MARCH 6th., 2024

OPERATOR	WELL NAME	CONTRACTOR	RIG No.	TYPE OF EQUIPMENT	COMMENTS
ANDES PETROLEUM	FANNY 18B187	CCDC	25	ZJ70DB - 2000 HP	MOBILIZING FROM TARAPOA NORTE 8 PAD
CONSORCIO FRONTERA GEOPARK BLOQUE PERICO	PERICO NORTE A6	TUSCANY DRILLING	119	HELI RIG 2000 HP	DRILLING 12 1/4" HOLE SECTION
ENAP SIPEC	MDC 66	TUSCANY DRILLING	117	HELI RIG 2000 HP	COMPLETION
ENAP SIPEC	INCHI E18	IES Ecuador (KCA DEUTAG FORMER PETREX)	T-624 (FORMER PETREX 5824)	NATIONAL 1320 (HELI RIG)	COMPLETION
PCR ENERGY	ARAZA NORESTE 1	CCDC	CCDC 036	ZJ70D -2000 HP	MOBILIZING FROM VHR SUR 01 TO ARAZA NORTE
EP PETROECUADOR (** see comment)	SACHA AQ605 (SCHAQ 605)	SINOPEC	129	ZJ70/4500D - 2000 HP	PREPARRING TO RUN 13 3/8" CASING
EP PETROECUADOR (** see comment)	SACHA AR500 (SCHAR 500)	SINOPEC	156	ZJ70/4500D 2000 HP	COMPLETION
EP PETROECUADOR (** see comment)	GACELA H010 (GCLH 010)	SINOPEC	191	ZJ70D/4500D50 - 2000 HP	COMPLETION
EP PETROECUADOR (** see comment)	SACHA A608 (SCHAA 608)	SINOPEC	219	ZJ70DB - 2000 HP	PREPARRING DOCUMENTATION TO RESTART COMPLETION
EP PETROECUADOR (** see comment)	SACHA AL542 (SCHAL 542)	SINOPEC	248	ZJ70DB - 2000 HP	COMPLETION
EP PETROECUADOR (** see comment)	PALMERAS NORTE A 016 (PLNA 016)	IES Ecuador (KCA DEUTAG FORMER PETREX)	T - 420 FORMER PETREX 20	HELI NATIONAL 1320 UE 2000 HP	COMMUNITIES BLOCKED SINCE JANUARY 30th RIG MOBILIZATION FROM WAPONI TO PALMERAS NORTE
EP PETROECUADOR ¹ (** see comment)	SHUSHUFINDI H148 (SHSH 148)	RMS (Former SLR, SCHLUMBERGER) ***	RPT - 402	MAVERICK T 1000 (2000 HP)	MOBILIZING FROM PAD AGRA 003
EP PETROECUADOR ² (** see comment)	YULEBRA D043H (YLB D 043H)	RMS (Former SLR, SCHLUMBERGER) ***	RPT - 401	MAVERICK T 1000 (2000 HP)	MOBILIZING RIG FROM ACAK 247 LOCATION
** EP PETROAMAZONAS WHICH MANAGED UPSTREAM OPERATIONS (EXPLORATION /PRODUCTION) WAS INTEGRATED SINCE 01/01/21 TO EP PETROECUADOR https://www.epetroecuador.ec/					
1.- To supply services in this area, Consorcio Shushufindi has signed a Contract with Petroamazonas (contrato de Campos Maduros)					
2.- To supply services in this area, SHAYA ECUADOR S.A. has signed a contract with Petroamazonas					
3.- To supply services in this area, TRIBOILGAS has signed a contract with Petroamazonas. (Proceso Oil & Gas 2018).					

STACKED DRILLING RIGS

CONTRACTOR	RIG No:	TYPE OF EQUIPMENT	COMMENTS
CCDC	CCDC 028	ZJ70D -2000 HP	MAINTENANCE IN SHPINGO PREVIOUS TO DEMOBILIZE TO
CCDC	CCDC 037	ZJ70DB - 2000 HP	PERFORMING A SPECIFIC WORKOVER JOB DUE TO PULLING CAPACITY REQUIREMENTS
CCDC	CCDC 039	ZJ50DB -1500 HP	COCA BASE
CCDC	CCDC 066	ZJ70D -2000 HP	DEMOBILIZING FROM ITT FIELD TOCOCA
CCDC	CCDC 069	ZJ70DB - 2000 HP	COCA BASE
HILONG	HL 15	ZJ70D 2000 HP	COCA BASE
SINOPEC	119	ZJ70/4500D - 2000 HP	COCA BASE
SINOPEC	127	ZJ70D - 2000 HP	COCA BASE
SINOPEC	168	ZJ70DB - 2000 HP	YURALPA G PAD (WAYRA ENERGY OPERATIONS AREA IN PETROECUADOR FIELD)
SINOPEC	183	ZJ70DB - 2000 HP	COCA BASE
SINOPEC	185	ZJ70DB - 2000 HP	DEMOBILIZING FROM ITT FIELD TO COCA
SINOPEC	220	ZJ70/4500D92 - 2000 HP	COCA BASE
TRIBOILGAS	202	SERVICE KING 1000 HP	VINITA PAD. MAINTENANCE

*** Rig Management Systems (RMS)

**ECUADOR WORKOVER RIGS *****MARCH 6th., 2024**

OPERATOR	WELL NAME	CONTRACTOR	RIG No.	TYPE OF EQUIPMENT	
ANDES PETROLEUM	ANNE 3	HILONG	HL - 3	DFXK JC11/21 650HP	
ANDES PETROLEUM	FANNY 198156	LOXODONTA	ELEFANTE 01	CORSAIR 475 HP (CRANE CARRIER COMPANY)	PERFORMING INSTALATION OF MECHANICAL PUMPING ARTIFICIAL LIFT
PETROLIENTAL	TAPIR NORTE 9	CCDC	51	X J650 - 650 HP	
ENAP SIPEC	MDC 38	ORIENDRILL	901	LOADCRAFT 650	
ENAP SIPEC	INCHIA5	TUSCANY DRILLING	105	CARE 650 HP	
ORION ENERGY	MIRA 01	GEOPETSA	7	KING SERVICES 750HP	
PCR ENERGY	YUCA SUR 01	ORIENDRILL	902	LOADCRAFT 650	
PETROBELL	TIGÜINO 21	PSS WORKOVER S.A.	PSS 816	HEARTLAND RIG INTERNATIONAL (HRI) 700 HP	
EP PETROECUADOR (** see comment)	PAKA SUR A004 (PKSA 004)	CCDC	40	ZJ20 - 650 HP	
EP PETROECUADOR (** see comment)	SHUSHUFINDI 076 (SHSA 076)	CCDC	42	XJ550 - 550 HP	
EP PETROECUADOR (** see comment)	PALO AZUL N051H (PLAN 051H)	CCDC	52	Z J - 650 HP	
EP PETROECUADOR (** see comment)	VINITA 001 (VNT 001)	DRILLCOTEC RIG DYGOIL	20	FRANKS 600	W.O.
EP PETROECUADOR (** see comment)	LAGO AGRIO C011 (LGAC 011)	DOWN HOLE TOOLS (DHT)	DT10	XJ650- 650 HP	W.O.
EP PETROECUADOR (** see comment)	DRAGO NORTE A048 (DRRA 048)	FAST DRILLING	FD 11	XJ 650 (700 HP)	W.O.
EP PETROECUADOR (** see comment)	IRO A 057 (IROA 057)	HILONG	HL - 18	DFXK JC11/21 650HP	W.O.
EP PETROECUADOR (** see comment)	EDEN YUTURI H146 (EDYH 146)	HILONG	HL - 28	DFXK JC11/21 650HP	W.O.
EP PETROECUADOR (** see comment)	SACHA G278 (SCHA 278)	TRIBOILGAS	101	550 HP	W.O.
EP PETROECUADOR (** see comment)	PARAHUACU C008 (PRHC 008)	TRIBOILGAS	102	550 HP	W.O.
EP PETROECUADOR (** see comment)	SACHA AF509H (SCHAF 509H)	TRIBOILGAS	103	LCT 550 HP	W.O.
EP PETROECUADOR (** see comment)	OSO H127 (OSOH 127)	TRIBOILGAS	104	LOADCRAFT 550	W.O.
EP PETROECUADOR (** see comment)	PAÑACOCCHA B017 (PCCB 017)	TRIBOILGAS	106	SERVICES KING 550 HP	W.O.
EP PETROECUADOR (** see comment)	ISHPINGO A010 (ISHA 010)	TRIBOILGAS	107	LOADCRAFT 550 HP	W.O.
EP PETROECUADOR (** see comment)	YANAGUINCHA NORTE A010 (YNNA 010)	TRIBOILGAS	201	DRILLING SERVICE KING 1000HP	W.O.
EP PETROECUADOR (** see comment)	SACHA 191 (SCH 191)	TRIBOILGAS	203	SERVICE KING 1000 HP	W.O.
EP PETROECUADOR (** see comment)	SACHA AJ422 (SCHAJ 422)	TRIBOILGAS	204	SERVICE KING 1000 HP	W.O.
EP PETROECUADOR ¹ (** see comment)	YUCA F029 (YCAF 029)	ORIENDRILL	903	LOADCRAFT 650	W.O.
EP PETROECUADOR ¹ (** see comment)	AUCA R131 (ACAR 131)	TUSCANY DRILLING	111	CARE 665 HP	W.O.
EP PETROECUADOR ¹ (** see comment)	AUCA H270H (ACAH 270H)	SINOPEC	932	XJ 650 - 650 HP	W.O.
EP PETROECUADOR ² (** see comment)	SHUSHUFINDI AD 020B (SHSAD 020B)	SINOPEC	903	XJ 650 - 650 HP	W.O.
EP PETROECUADOR ² (** see comment)	SHUSHUFINDI 011 (SHS 011)	SINOPEC	904	ZJ30 - 750 HP	W.O.
EP PETROECUADOR ³ (** see comment)	ATACAPI E015 (ATCE 015)	TUSCANY DRILLING	104	CARE 550 HP	W.O.
EP PETROECUADOR ³ (** see comment)	LIMONCOCHA G052 (LMNG 052)	SINOPEC	905	ZJ30 - 750 HP	W.O.
EP PETROAMAZONAS ⁵ (** see comment)	VICTOR HUGO RUALES 0024 (VHRC 024)	GEOPETSA	5	LTO-550-WIN-26606	W.O.
EP PETROECUADOR ⁴ (** see comment)	PARAHUACU A033 (PRHA 033)	CCDC	37	ZJ70DB - 2000 HP*	*IT'S A DRILLING RIG USED ONLY FOR A SPECIFIC WORKOVER REQUIREMENT NEEDING HIGH PULLING CAPACITY.

** EP PETROAMAZONAS WHICH MANAGED UPSTREAM OPERATIONS (EXPLORATION / PRODUCTION) WAS INTEGRATED SINCE 01/01/21 TO EP PETROECUADOR <https://www.epetroecuador.ec/>

1.- To supply services in this area. SHAYA ECUADOR S.A. has signed a contract with Petroamazonas

2.- To supply services in this area. Consorcio Shushufindi has signed a Contract with Petroamazonas (contrato de Campos Maduros)

3.- To supply services in this area. Consorcio Pardalis has signed a Contract with Petroamazonas (contrato de Campos Maduros)

4.- To supply services in this area. Consorcio PANATURI has signed a contract with Petroamazonas (Contrato de campos Maduros)

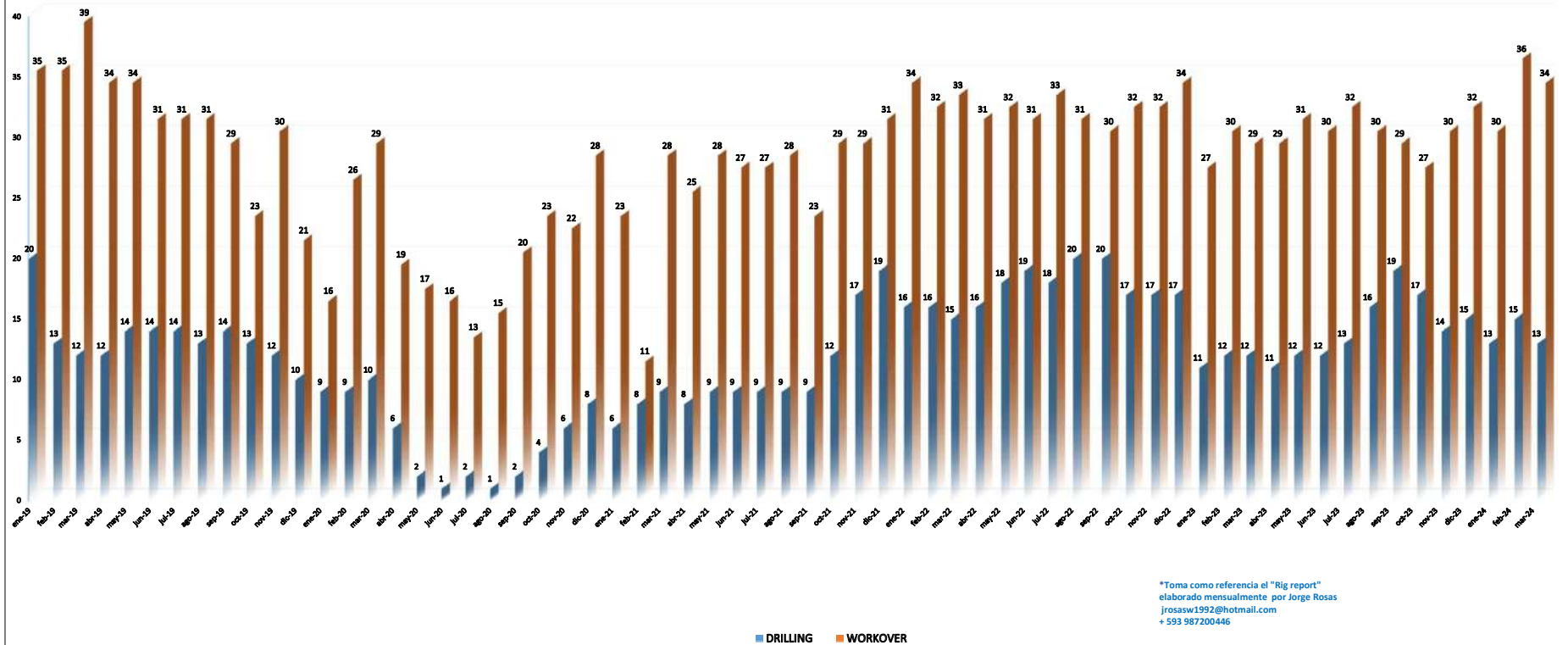
5.- To supply services in this area. Consorcio IGAPO has signed a contract with Petroamazonas (contrato de campos Maduros)

6.- To supply services in this area. CNPC has signed a contract with Petroamazonas. (Campos Menores)

STACKED WORKOVER RIGS

CONTRACTOR	RIG No.	TYPE OF EQUIPMENT	STACKED
CCDC	CCDC 41	XJ550 - 650 HP	COCA BASE
DYGOIL	30	CAMERON 600	SHUSHUFINDI (MAINTENANCE).
EDS PETROLEUM	EDS-CHA04	NOV 5C 550 HP	JVINO VERDE BASE
ESPINEL & ASOCIADOS	EA - 12	XJ650	COCA BASE. INSPECTION/MAINTENANCE
GEOPETSA	3	WILSON 42B 500	COCA BASE
GEOPETSA	4	UPET 550 HP	COCA BASE
GEOPETSA	6	ZPEC 650	COCA BASE
OCIPAG (THIS RIG WAS BEFORE RIG VICTORIA 01 , OWNED BY NORDRILCO)	OCIPAG 01	NATIONAL OILWELL VARCO NOV 550 HP	LAGO AGRIO
NORDRILCO (NORWEGIAN DRILLING COMPANY)	VICTORIA 01	NATIONAL OILWELL VARCO NOV 550 HP	COCA BASE
NORDRILCO (NORWEGIAN DRILLING COMPANY)	VICTORIA 02	SJ PETRO MODELO XJ550	COCA BASE
NORDRILCO (NORWEGIAN DRILLING COMPANY)	VICTORIA 03	SJ PETROLEUM MACHINERY 750 HP MODELO ZJ30	COCA BASE
NORDRILCO (NORWEGIAN DRILLING COMPANY)	VICTORIA 04	SJ PETROLEUM MACHINERY 650 HP MODELO S.JX5540 TX650	COCA BASE
ORIENDRILL	904	XJ 650 - 650 HP	SACHA BASE
ORIENDRILL	905	XJ 650 - 650 HP	SACHA BASE
PETROELF S.A.	6357	FRANKS 650 HP	COCA BASE
PLUSPETROL ECUADOR B.V.	PPE 01	OIME 750SL	STBY. VILLANO "A" PAD
PLUSPETROL ECUADOR B.V.	PPE 02	OIME 500	STBY. VILLANO "B" PAD
PSS WORKOVER S.A.	PSS 815	IRI 2042 / FRANKS 600	
SINOPEC	907	XJ 550 - 550 HP	COCA BASE
SINOPEC	908	XJ 650 - 650 HP	COCA BASE
TRIBOILGAS	5	LTO-550-WIN-26606	COCA BASE
TRIBOILGAS	6	COOPER 550	COCA BASE
TRIBOILGAS	105	CROWN 550 HP	COCA BASE
TRIBOILGAS	106	SERVICES KING 550 HP	COCA BASE
TRIBOILGAS	108	COOPER 550DD	COCA BASE
TRIBOILGAS	109	LANCO 550 HP	TAMBILLO (QUITO). PREPARING RIG
TRIBOILGAS	110	LANCO 550 HP	TAMBILLO (QUITO). PREPARING RIG
TRIBOILGAS	205	SERVICE KING 1000 HP	TAMBILLO (QUITO)
TRIBOILGAS	206	SERVICE KING 775 HP	COCA BASE

REFERENCIA HISTORICA DEL NIVEL DE RIGS EN ACTIVIDAD EN ECUADOR *



*Toma como referencia el "Rig report" elaborado mensualmente por Jorge Rosas
 jrosasw1992@hotmail.com
 + 593 987200446

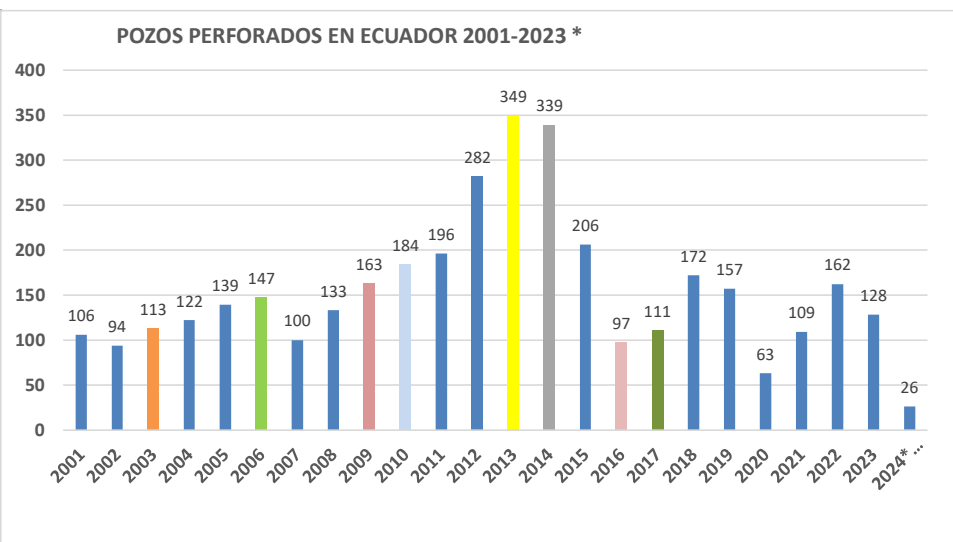
POZOS PERFORADOS EN ECUADOR 2024 (hasta Marzo 11) * Información recopilada por Jorge Rosas W. jrosasw1992@hotmail.com +593 9 87200446

No.	OPERADORA	POZOS	BLOQUE	CONFIGURACION DEL POZO	CLASIFICACION	PROFUNDIDAD TOTAL (MD/TVD)	FECHA INICIO (DD-MM-AAAA)	FECHA LLEGA A PT (DD-MM-AAAA)	RIG	DIRECCIONAL	LODOS	SOLID CONTROL & WATER MANAGEMENT	BROCAS	MUDLOGGING	CEMENTACION	CORRIADA DE CASINGS	MARTILLOS	LINER HANGER	REGISTROS OPEN MOLE	GARZALES	COMPROMISOS DE TIEMPO DEL POZO (Días)	TIEMPO DE PERFORACION (Días)	PROFUNDIDAD DEL POZO (MD/TVD)
1	ANDES PETROLEUM	JOHANNA ESTE 72	62	TIPO J	DESARROLLO	9236 / 8562	08-02-24	17-02-24	CCDC 25	HALL	SLB	ENVI	HALL	ENVI	HALL	MISSION PETROLEUM	SLB	TIW (DrillUp)	HALL	MISSION PETROLEUM			
2	ANDES PETROLEUM	JOHANNA ESTE 73	62	TIPO J	DESARROLLO	9020H / 8533	18-02-24	28-02-24	CCDC 25	HALL	SLB	ENVI	HALL	ENVI	HALL	MISSION PETROLEUM	SLB	TIW (DrillUp)	HALL	MISSION PETROLEUM			
3	ANDES PETROLEUM	FANNY 18B-187	62	TIPO J	DESARROLLO				TUSCANY 117	ENVI	ENVI	ENVI	ENVI	ENVI	HALL	TIW (DrillUp)	ENVI	TIW (DrillUp)	SLB (LWD)	MISSION PETROLEUM			
4	ENAP	MDC 65	46	TIPO J	DESARROLLO	10475 / 10093	09-01-24	02-02-24	TUSCANY 117	SLB	SLB	SLB	SLB	SLB	SLB	EXPRO-FORMER FRANK'S INTL	ADRIALPETRO	SLB	SLB (LWD)	MISSION PETROLEUM		BES	SLB
5	ENAP	MDC 66	46	TIPO J	DESARROLLO	11476 / 10053	12-02-24	04-03-24	TUSCANY 117	SLB	SLB	SLB	SLB	SLB	SLB	EXPRO-FORMER FRANK'S INTL	SLB	SLB	SLB (LWD)	MISSION PETROLEUM			
6	ENAP	INCHI E17	47	TIPO J MODIFICADA	DESARROLLO	12607 / 10135	07-01-24	29-01-24		HALL	HALL	HALL	HALL	HALL	HALL	MISSION PETROLEUM	ADRIALPETRO	HALL	HALL (LWD)	MISSION PETROLEUM		BES	SLB
7	ENAP	INCHI E18	47	TIPO J	DESARROLLO	12260 / 10143	12-02-24	04-03-24		HALL	HALL	HALL	HALL	DATALOG	HALL	MISSION PETROLEUM		HALL	HALL (LWD)	MISSION PETROLEUM			
8	CONSORCIO FRONTERA GEOPARK BLOQUE PERICO	PERICO NORTE A5	88	TIPO J	AVANZADA	11550 / 10257	26-01-23	16-02-24	TUSCANY 119	HALL	HALL	HALL	HALL	ENLOG	HALL	MISSION PETROLEUM	ADRIALPETRO	SLB	HALL (LWD)	MISSION PETROLEUM		BES	ALREX/ST (95 1300)
9	CONSORCIO FRONTERA GEOPARK BLOQUE PERICO	PERICO NORTE A6	88	TIPO J	AVANZADA		27-02-23		TUSCANY 119	HALL	HALL	HALL	HALL	ENLOG	HALL	MISSION PETROLEUM	ADRIALPETRO	BAKER	HALL (LWD)	MISSION PETROLEUM			
10	ORION ENERGY	RON 10	54	TIPO J	DESARROLLO	11091 / 9973	01-12-23	10-01-24	SINOPEC 183	SLB	SLB	SLB	SLB	SLB	SLB	MISSION PETROLEUM	SLB	TIW (DrillUp)	SLB	MISSION PETROLEUM		BES	SLB (RC 10000)
11	PCR ENERGY	VHR SUR 02	90	TIPO S	EXPLORATORIO	8370 / 8166	18-12-23	06-01-24	CCDC 36	SLB	SLB	SLB	SLB	ENLOG	SLB	TIW (DrillUp)	SLB	TIW (DrillUp)	SLB	MISSION PETROLEUM			
12	PCR ENERGY	VHR SUR 03 ST1	90	TIPO J EXTENDIDO	EXPLORATORIO	12262 / 8240	06-01-24	02-03-24	CCDC 36	SLB	SLB	SLB	SLB	ENLOG	SLB	TIW (DrillUp)	SLB	TIW (DrillUp)	SLB	MISSION PETROLEUM			
13	PCR ENERGY	ARAZA NORESTE 1	91	TIPO J	EXPLORATORIO				CCDC 36	SLB	SLB	SLB	SLB	ENLOG	SLB	TIW (DrillUp)	SLB	TIW (DrillUp)	SLB	MISSION PETROLEUM			
14	EP PETROECUADOR	ISHPINGO B063 (ISHB063)	43	TIPO J	DESARROLLO	6260 / 5793	31-12-22	19-01-24	CCDC 28	SLB	CCIX	SINOPEC	ULTRERA	PETROHEM	HALL	SINOPEC (CASING TEAM)	VES SURVEY	TIW (DrillUp)	SLB (LWD)	MISSION PETROLEUM		BES	BAKER (FLEX 01)
15	EP PETROECUADOR	ISHPINGO B062 (ISHB062)	43	TIPO J	DESARROLLO		17-09-23	SUPERVISION TEMPORAL DE PERFORACION	CCDC 28	SLB	CCIX	SINOPEC	SLB	PETROHEM	CCDC	SINOPEC (CASING TEAM)	SLB	TIW (DrillUp)	SLB (LWD)	MISSION PETROLEUM			
16	EP PETROECUADOR	ISHPINGO B064 (ISHB 064)	43	TIPO J	DESARROLLO	6490 / 5621	26-12-23	18-01-24	CCDC 28	SLB	CCIX	SINOPEC	SLB	ENVI	CCDC	SINOPEC (CASING TEAM)	SLB	TIW (DrillUp)	SLB (LWD)	MISSION PETROLEUM		BES	BAKER (F35)
17	EP PETROECUADOR	ISHPINGO B024 (ISHB 024)	43	TIPO J	DESARROLLO	7095 / 5626	19-12-23	06-02-24	SINOPEC 185	SLB	SINOPEC	SINOPEC	SLB	PETROHEM	DRILLCOTEC	SINOPEC (CASING TEAM)	SLB	TIW (DrillUp)	SLB (LWD)	MISSION PETROLEUM		BES	BAKER (F300)
18	EP PETROECUADOR	ISHPINGO B043H (ISHB 043H)	43	HORIZONTAL	DESARROLLO	9300 / 4885	27-12-23	25-01-24	SINOPEC 185	HALL	SINOPEC	SINOPEC	SLB	ENVI	HALL	SINOPEC (CASING TEAM)	SLB	TIW (DrillUp)	HALL (LWD)	MISSION PETROLEUM		BES	ALREX/ST (MD 2000)
19	EP PETROECUADOR	GACELA H019 (GCLH 019)	60	TIPO J	DESARROLLO	12751 / 9715	23-01-24	24-02-24	SINOPEC 191	SLB	SINOPEC	SINOPEC	ENVI	ENLOG	DRILLCOTEC	SINOPEC (CASING TEAM)	SLB	HALL	SLB	MISSION PETROLEUM		BES	NOVAMET NR1600 2300H
20	EP PETROECUADOR	GACELA H011 (GCLH 011)	60	TIPO J	DESARROLLO		06-03-24		SINOPEC 191	SLB	SINOPEC	SINOPEC	ENVI	ENLOG	DRILLCOTEC	SINOPEC (CASING TEAM)	SLB	HALL	SLB (LWD)	MISSION PETROLEUM			
21	EP PETROECUADOR	SACHA A190 (SCHA 190)	60	TIPO J REENTRY	DESARROLLO	10407 / 10065	29-12-23	16-01-24	SINOPEC 219	HALL	HALL	HALL	HALL	ENLOG	HALL	MISSION PETROLEUM	SLB	HALL	HALL (LWD)	MISSION PETROLEUM		BES	BAKER (E100) H6 5SD
22	EP PETROECUADOR	SACHA A608 (SCHA 608)	60	TIPO J	DESARROLLO	11424 / 10079	31-01-24	21-02-24	SINOPEC 219	HALL	HALL	HALL	HALL	ENLOG	HALL	MISSION PETROLEUM	SLB	HALL	HALL (LWD)	MISSION PETROLEUM			
23	EP PETROECUADOR	SACHA AL544 (SCHAL 544)	60	TIPO J	DESARROLLO	11268 / 10181	12-01-24	29-01-24	SINOPEC 248	SLB	SINOPEC	SINOPEC	SLB	SINOPEC	SLB	SINOPEC (CASING TEAM)	SLB	HALL	SLB	ENVI/IR/ROL		BES	BAKER (FLUX DR)
24	EP PETROECUADOR	SACHA AL542 (SCHAL 542)	60	TIPO J	DESARROLLO	11752 / 10186	11-02-24	02-03-24	SINOPEC 248	SLB	SINOPEC	SINOPEC	ENVI	SLB	SLB	SINOPEC (CASING TEAM)	SLB	HALL	SLB (LWD)	ENVI/IR/ROL		BES	BAKER (M 1750)
25	EP PETROECUADOR	SACHA AR500 (SCHAR 500)	60	TIPO J	DESARROLLO	10222 / 10199	01-02-24	28-02-24	SINOPEC 166	SLB	SINOPEC	SINOPEC	SLB	SLB	HALL	SINOPEC (CASING TEAM)	SLB	HALL	SLB	MISSION PETROLEUM			
26	EP PETROECUADOR	SACHA AQ655 (SCHAQ 655)	60	TIPO J	DESARROLLO		26-02-24		SINOPEC 129	BAKER	SINOPEC	SINOPEC	ENVI	SINOPEC	SLB	SINOPEC (CASING TEAM)	SLB	HALL	BAKER (LWD)	MISSION PETROLEUM			
27	EP PETROECUADOR	WAPONI A022 (WPA 022)	60	TIPO S	EXPLORATORIO	10063 / 9847	14-12-23	13-01-24		HALL	HALL	HALL	HALL	ENLOG	HALL	TIW (DrillUp)	ADRIALPETRO	HALL	HALL	MISSION PETROLEUM			
28	EP PETROECUADOR ¹	AUCA K189H (ACAOK 189H)	61	HORIZONTAL	DESARROLLO	13742 / 9714	19-12-23	13-01-24	SLR 401	SLB	SLB	SLB	SLB	SLB	SLB	TIW (DrillUp)	SLB	SLB	SLB (LWD)	SLB (CAMERON)		BES	SLB (S4000)
29	EP PETROECUADOR ¹	AUCA K347 (ACAOK 247)	61	TIPO J	DESARROLLO	13860 / 10177	24-01-24	18-02-24	SLR 401	SLB	SLB	SLB	SLB	SLB	SLB	TIW (DrillUp)	SLB	TIW (DrillUp)	SLB (LWD)	SLB (CAMERON)		BES	SLB
30	EP PETROECUADOR ¹	YULEBRA D043H (YLBOD 043H)	61	HORIZONTAL	DESARROLLO				SLR 401	SLB	SLB	SLB	SLB	SLB	SLB	TIW (DrillUp)	SLB	SLB (LWD)	SLB (CAMERON)				
31	EP PETROECUADOR ²	AGUARICO A032 (AGRA032)	57	TIPO J	DESARROLLO	10125 / 9589	06-01-24	20-01-24	SLR 402	SLB	SLB	SLB	SLB	SLB	SLB	EXPRO-FORMER FRANK'S INTL	SLB	TIW (DrillUp)	SLB (LWD)	SLB (CAMERON)		BES	RC D400NX
32	EP PETROECUADOR ²	AGUARICO A041 (AGRA041)	57	TIPO J	DESARROLLO	10165 / 9565	07-02-24	27-02-24	SLR 402	SLB	SLB	SLB	SLB	SLB	SLB	EXPRO-FORMER FRANK'S INTL	SLB	TIW (DrillUp)	SLB (LWD)	SLB (CAMERON)			
33	EP PETROECUADOR ²	SHUSAFUNDI H148 (SHSH 148)	57	TIPO J HD	DESARROLLO				SLR 402	SLB	SLB	SLB	SLB	SLB	SLB	EXPRO-FORMER FRANK'S INTL	SLB	NA	SLB (LWD)	SLB (CAMERON)			
34	EP PETROECUADOR ³	WINTA 0038 (WNTD 038)	59	TIPO J MODIFICADO	DESARROLLO	6083 / 7943	07-01-24	24-01-24	TRIBOLGAS 202	INTREPID	BAKER	BAKER	ULTRERA	SLB	SLB	TIW (DrillUp)	PPP	TIW (DrillUp)	SLB	MISSION PETROLEUM		BES	BAKER (FLEX 17)

1.- Para suministrar servicios en esta área, SHAVA ECUADOR S.A. ha firmado un contrato con Petrobrasasas EP.
 2.- Para suministrar servicios en esta área, Concesionaria SINOPEC ha firmado un contrato con Petrobrasasas EP.
 3.- Para suministrar servicios en esta área (Bionca - Winta), Tribolgas ha firmado un contrato con Petrobrasasas EP.

POZOS PERFORADOS EN ECUADOR 2001 - 2024 *

AÑO	POZOS PERFORADOS
2001	106
2002	94
2003	113
2004	122
2005	139
2006	147
2007	100
2008	133
2009	163
2010	184
2011	196
2012	282
2013	349
2014	339
2015	206
2016	97
2017	111
2018	172
2019	157
2020	63
2021	109
2022	162
2023	128
2024* (Hasta Marzo 10/2024)	26



Elaborado por:

Jorge Rosas jrosasw1992@hotmail.com

Cel: + 593 9 8 7200446

* Este cuadro está basado en información recolectada a través de las distintas compañías de servicio y operadoras, así como de los organismos gubernamentales respectivos. En cada año se consideran solo los pozos que hayan culminado el evento de perforación en ese período.

Recordamos que se hacen todos los esfuerzos para que la información sea lo más fidedigna posible, sin embargo, no podemos garantizar su infalibilidad. También deslindamos responsabilidad del uso posterior que se haga a esta recopilación de información.