



**ECUADOR DRILLING RIGS \***

**FEBRUARY 6th., 2024**

OPERATOR	WELL NAME	CONTRACTOR	RIG No.	TYPE OF EQUIPMENT	COMMENTS
ANDES PETROLEUM	JOHANNA ESTE 72	CCDC	25	COMPLETION+F7:F21	DRILLING
CONSORCIO FRONTERA GEOPARK BLOQUE PERICO	PERICO NORTE A5	TUSCANY DRILLING	119	ZJ70/4500D - 2000 HP	DRILLING 8 1/2" HOLE SECTION
ENAP SIPEC	MDC 65	TUSCANY DRILLING	117	HELI RIG 2000 HP	COMPLETION
ENAP SIPEC	INCHI E17	IES Ecuador (KCA DEUTAG FORMER PETREX)	T-824 (FORMER PETREX 5824)	NATIONAL 1320 (HELI RIG)	COMPLETION
PCR ENERGY	VHR SUR 03ST1	CCDC	CCDC 036	ZJ70D -2000 HP	DRILLING
EP PETROECUADOR (** see comment)	ISHPINGO B066 (ISHB 066)	CCDC	CCDC 028	ZJ70D -2000 HP	COMPLETION
EP PETROECUADOR (** see comment)	SACHA AR500 (SCHAR 500)	SINOPEC	156	ZJ70/4500D 2000 HP	RUNNING 13 3/8" CSG.
EP PETROECUADOR (** see comment)	GACELA H10 (GCLH 010)	SINOPEC	191	ZJ70D/4500D50 - 2000 HP	DRILLING
EP PETROECUADOR (** see comment)	ISHPINGO B024 (ISHB 024)	SINOPEC	185	ZJ70DB - 2000 HP	RUNNING 9 5/8" CSG.
EP PETROECUADOR (** see comment)	SACHA A608 (SCHA 608)	SINOPEC	219	ZJ70DB - 2000 HP	CEMENTING 13 3/8" CSG.
EP PETROECUADOR (** see comment)	SACHA AL542 (SCHAL 542)	SINOPEC	248	ZJ70DB - 2000 HP	MOBILIZING FROM SACHA AL544
EP PETROECUADOR (** see comment)	WAPONI A002 (WPNA 002)	IES Ecuador (KCA DEUTAG FORMER PETREX)	T - 420 FORMER PETREX 20	HELI NATIONAL 1320 UE 2000 HP	COMMUNITIES BLOCKED SINCE JANUARY 30th RIG MOBILIZATION FROM WAPONI TO PALMERAS NORTE
EP PETROECUADOR <sup>1</sup> (** see comment)	AGUARICO A035 (AGRA 035)	RMS (Former SLR, SCHLUMBERGER) ***	RPT - 402	MAVERICK T 1000 (2000 HP)	COMPLETION
EP PETROECUADOR <sup>2</sup> (** see comment)	AUCA K247 (ACAK 247)	RMS (Former SLR, SCHLUMBERGER) ***	RPT - 401	MAVERICK T 1000 (2000 HP)	DRILLING 12 1/4" HOLE SECTION
EP PETROECUADOR <sup>3</sup> (**see comment)	VINITA D018 (VNTD018)	TRIBOILGAS	202	SERVICE KING 1000 HP	COMPLETION

\*\* EP PETROAMAZONAS WHICH MANAGED UPSTREAM OPERATIONS (EXPLORATION /PRODUCTION) WAS INTEGRATED SINCE 01/01/21 TO EP PETROECUADOR <https://www.epetroecuador.ec/>

1.- To supply services in this area, Consorcio Shushufindi has signed a Contract with Petroamazonas (contrato de Campos Maduros)

2.- To supply services in this area, SHAYA ECUADOR S.A. has signed a contract with Petroamazonas

3.- To supply services in this area, TRIBOILGAS has signed a contract with Petroamazonas. (Proceso Oil & Gas 2018)

**STACKED DRILLING RIGS**

CONTRACTOR	RIG No:	TYPE OF EQUIPMENT	COMMENTS
CCDC	CCDC 037	ZJ70DB - 2000 HP	STACKED PARAHUACU H PAD
CCDC	CCDC 039	ZJ50DB -1500 HP	COCA BASE
CCDC	CCDC 066	ZJ70D -2000 HP	DEMobilizing FROM ITT FIELD TOCOCA
CCDC	CCDC 069	ZJ70DB - 2000 HP	COCA BASE
HILONG	HL 15	ZJ70D 2000 HP	COCA BASE
SINOPEC	119	ZJ70/4500D - 2000 HP	COCA BASE
SINOPEC	127	ZJ70D - 2000 HP	COCA BASE
SINOPEC	129	ZJ70/4500D - 2000 HP	STARTING RIG MOVE FROM SINOPEC COCA BASE TO SACHA FIELD (PETROECUADOR) TO START DRILLING CAMPAIGN
SINOPEC	168	ZJ70DB - 2000 HP	YURALPA G PAD (WAYRA ENERGY OPERATIONS AREA IN PETROECUADOR FIELD)
SINOPEC	183	ZJ70DB - 2000 HP	COCA BASE
SINOPEC	220	ZJ70/4500D92 - 2000 HP	COCA BASE

\*\*\* Rig Management Systems (RMS)

\*Jorge Rosas [jrosasw1992@hotmail.com](mailto:jrosasw1992@hotmail.com) +593 9 87200446

**ECUADOR WORKOVER RIGS \***

FEBRUARY 6th., 2024

OPERATOR	WELL NAME	CONTRACTOR	RIG No.	TYPE OF EQUIPMENT	COMMENTS
ANDES PETROLEUM	ALICE OESTE 8 ST1	HILONG	HL - 3	DFXK JC11/21 650HP	W.O.
PETRORIENTAL	HORMIGUERO SUR 12	CCDC	51	X J650 - 650 HP	W.O.
ENAP SIPEC	MDC 19	ORIENDRILL	901	LOADCRAFT 650	MOBILIZING FROM PARAISO 13
ENAP SIPEC	MDC 55	TUSCANY DRILLING	105	CARE 650 HP	W.O.
ORION ENERGY	OCANO 3	PSS WORKOVER S.A.	PSS 815	IRI 2042 / FRANKS 600	MOBILIZING FROM ENO 3 TO OCANO 3
ORION ENERGY	RON 007	GEOPETA	7	KING SERVICES 750HP	MOBILIZING FROM PARAHUACU G (PETROECUADOR FIELD) TO RON 007
PCR ENERGY	PINDO 19	GEOPETA	3	WILSON 42B 500	W.O.
PETROBELL	TIGUINO 38	PSS WORKOVER S.A.	PSS 816	HEARTLAND RIG INTERNATIONAL (HRI) 700 HP	MOBILIZING FROM COCA TO LOCATION
EP PETROECUADOR (** see comment)	SACHA AJ240 (SCHAJ 240)	CCDC	40	Z J20 - 650 HP	W.O.
EP PETROECUADOR (** see comment)	SHUSHUFINDI W142 (SHSW 142)	CCDC	42	XJ550 - 550 HP	W.O.
EP PETROECUADOR (** see comment)	PUCUNA A005 (PCNA 005)	CCDC	52	Z J - 650 HP	W.O.
EP PETROECUADOR (** see comment)	CUYABENO 014 (CYB 014)	DRILLCOTEC RIG DYGOIL	20	FRANKS 600	W.O.
EP PETROECUADOR (** see comment)	GUANTA E031 (GNTE 031)	DOWN HOLE TOOLS (DHT)	DT10	XJ650 - 650 HP	W.O.
EP PETROECUADOR (** see comment)	SHUSHUFINDI X211 (SHSX 211)	FAST DRILLING	FD 11	XJ 650 (700 HP)	W.O.
EP PETROECUADOR (** see comment)	GINTA A009 (GNAA 009)	HILONG	HL - 18	DFXK JC11/21 650HP	W.O.
EP PETROECUADOR (** see comment)	EDEN YUTURI D039 (EDYD 039)	HILONG	HL - 28	DFXK JC11/21 650HP	W.O.
EP PETROECUADOR (** see comment)	SACHA 093 (SCH 093)	TRIBOILGAS	101	550 HP	W.O.
EP PETROECUADOR (** see comment)	VICTOR HUGO RUALES B020 (VHRB 020)	TRIBOILGAS	102	550 HP	W.O.
EP PETROECUADOR (** see comment)	SACHA Q215 (SCHQ 215)	TRIBOILGAS	103	LCT 550 HP	W.O.
EP PETROECUADOR (** see comment)	COCA K029 (COCK 029)	TRIBOILGAS	104	LOADCRAFT 550	W.O.
EP PETROECUADOR (** see comment)	TIPUTINI CP0981 (TPTCP 0981)	TRIBOILGAS	107	LOADCRAFT 550 HP	W.O.
EP PETROECUADOR (** see comment)	PAÑACCOCHA A031 (PCCA 031)	TRIBOILGAS	106	SERVICES KING 550 HP	W.O.
EP PETROECUADOR (** see comment)	YANAQUINCHA OESTE B020 (YNOB 020)	TRIBOILGAS	201	DRILLING SERVICE KING 1000HP	W.O.
EP PETROECUADOR (** see comment)	SACHA D020 (SCHD 020)	TRIBOILGAS	203	SERVICE KING 1000 HP	W.O.
EP PETROECUADOR (** see comment)	SACHA V206 (SCHV206)	TRIBOILGAS	204	SERVICE KING 1000 HP	W.O.
EP PETROECUADOR <sup>1</sup> (** see comment)	CHONTA SUR A006 (CHSA 006)	ORIENDRILL	902	LOADCRAFT 650	W.O.
EP PETROECUADOR <sup>1</sup> (** see comment)	AUCA F163 (ACAF 163)	ORIENDRILL	903	LOADCRAFT 650	W.O.
EP PETROECUADOR <sup>1</sup> (** see comment)	AUCA H106 (ACAI 106)	TUSCANY DRILLING	111	CARE 665 HP	W.O.
EP PETROECUADOR <sup>1</sup> (** see comment)	YULEBRA D029 (YLB0 029)	SINOPEC	932	XJ 650 - 650 HP	W.O.
EP PETROECUADOR <sup>2</sup> (** see comment)	SHUSHUFINDI Q180 (SHSQ 180)	SINOPEC	903	XJ 650 - 650 HP	W.O.
EP PETROECUADOR <sup>2</sup> (** see comment)	SHUSHUFINDI 067 (SHS 067)	SINOPEC	904	ZJ30 - 750 HP	W.O.
EP PETROECUADOR <sup>3</sup> (** see comment)	ATACAPI E022 (ATCE 022)	TUSCANY DRILLING	104	CARE 550 HP	W.O.
EP PETROECUADOR <sup>4</sup> (** see comment)	LIMONCOCHA K021 (LMNK 021)	SINOPEC	905	ZJ30 - 750 HP	W.O.
EP PETROAMAZONAS <sup>5</sup> (** see comment)	VICTOR HUGO RUALES E029 (VHRE 029)	GEOPETA	5	LTO-550-VIN-26606	W.O.
EP PETROECUADOR <sup>6</sup> (** see comment)	ARMADILLO B006 (ARMB 006)	GEOPETA	6	ZPEC 650	W.O.
EP PETROECUADOR <sup>7</sup> (** see comment)	YURALPA CENTRO E028 (YRCE 028)	NORDRILCO (NORWEGIAN DRILLING COMPANY)	VICTORIA 01	NATIONAL OILWELL VARCO NOV 550 HP	W.O.

\*\* EP PETROAMAZONAS WHICH MANAGED UPSTREAM OPERATIONS (EXPLORATION / PRODUCTION) WAS INTEGRATED SINCE 01/01/21 TO EP PETROECUADOR <https://www.epetroecuador.ec/>

1.- To supply services in this area, SHAYA ECUADOR S.A. has signed a contract with Petroamazonas

2.- To supply services in this area, Consorcio Shushufindi has signed a Contract with Petroamazonas (contrato de Campos Maduros)

3.- To supply services in this area, Consorcio Pardalis has signed a Contract with Petroamazonas (contrato de Campos Maduros)

4.- To supply services in this area, Consorcio PAÑATURI has signed a contract with Petroamazonas (Contrato de campos Maduros)

5.- To supply services in this area, Consorcio IGAP0 has signed a contract with Petroamazonas (contrato de campos Maduros)

6.- To supply services in this area, ECUASERVOIL, has signed a contract with Petroamazonas

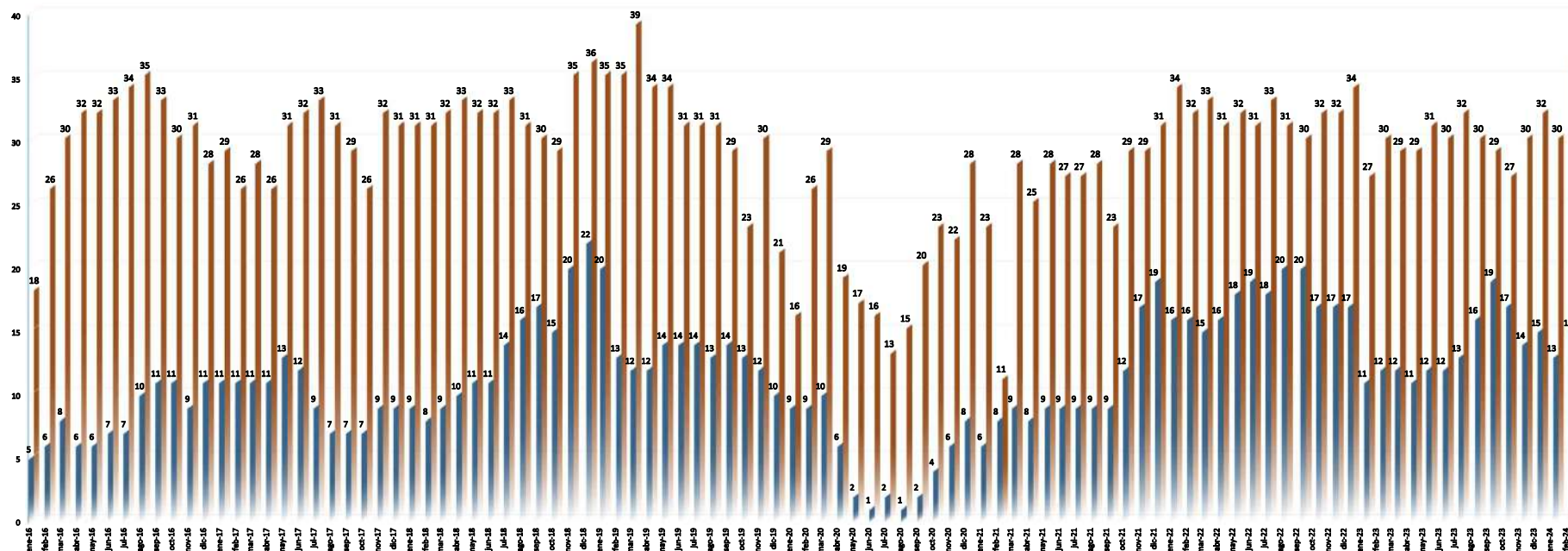
7.- To supply services in this area, Consorcio WAYRA ENERGY has signed a contract with Petroamazonas, (Campos Menores)

**STACKED WORKOVER RIGS**

CONTRACTOR	RIG No.	TYPE OF EQUIPMENT	STACKED
CCDC	CCDC 41	XJ550 - 650 HP	COCA BASE
DYGOIL	30	CAMERON 600	SHUSHUFINDI (MAINTENANCE)
EDS PETROLEUM	EDS-CHA04	NOV 5C 550 HP	JIVNO VERDE BASE
ESPINEL & ASOCIADOS	EA - 12	FRANKS 600	COCA BASE
GEOPETA	4	UPET 550 HP	COCA BASE
LOXODONTA	ELEFANTE 01	CORSAIR 475 HP (CRANE CARRIER COMPANY)	COCA BASE
OCIPAG (THIS RIG WAS BEFORE RIG VICTORIA 01, OWNED BY NORDRILCO)	OCIPAG 01	NATIONAL OILWELL VARCO NOV 550 HP	LAGO AGRIO
NORDRILCO (NORWEGIAN DRILLING COMPANY)	VICTORIA 02	SJ PETRO MODELO XJ550	COCA BASE
ORIENDRILL	904	XJ 650 - 650 HP	SACHA BASE
ORIENDRILL	905	XJ 650 - 650 HP	SACHA BASE
PETROELF S.A.	6357	FRANKS 650 HP	COCA BASE
PLUSPETROL ECUADOR B.V.	PPE 01	OIME 750SL	STBY. VILLANO "A" PAD
PLUSPETROL ECUADOR B.V.	PPE 02	OIME 500	STBY. VILLANO "B" PAD
SINOPEC	907	XJ 550 - 550 HP	COCA BASE
SINOPEC	908	XJ 650 - 650 HP	COCA BASE
TRIBOILGAS	5	LTO-550-VIN-26606	COCA BASE
TRIBOILGAS	6	COOPER 550	COCA BASE
TRIBOILGAS	105	CROWN 550 HP	COCA BASE
TRIBOILGAS	106	SERVICES KING 550 HP	COCA BASE
TRIBOILGAS	108	COOPER 5500D	COCA BASE
TRIBOILGAS	109	LANCO 550 HP	TAMBILLO (QUITO), PREPARRING RIG
TRIBOILGAS	110	LANCO 550 HP	TAMBILLO (QUITO), PREPARRING RIG
TRIBOILGAS	205	SERVICE KING 1000 HP	TAMBILLO (QUITO)
TRIBOILGAS	206	SERVICE KING 775 HP	COCA BASE

\*Jorge Rosas jrosasw1992@hotmail.com +593 9 87200446

### REFERENCIA HISTORICA DEL NIVEL DE RIGS EN ACTIVIDAD EN ECUADOR \*

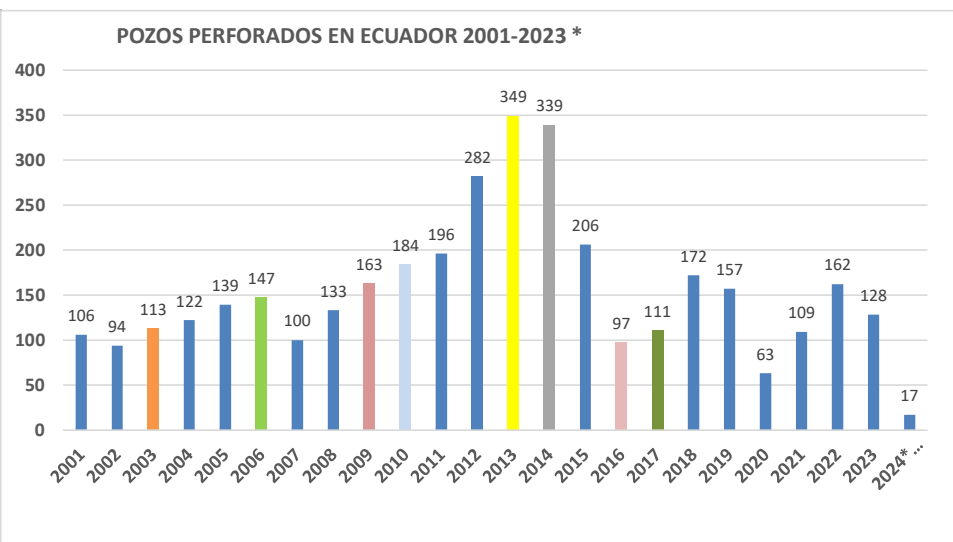


■ DRILLING ■ WORKOVER

\*Toma como referencia el "Rig report"  
 elaborado mensualmente por Jorge Rosas  
 jrosasw1992@hotmail.com  
 +593 987200446

## POZOS PERFORADOS EN ECUADOR 2001 - 2024 \*

AÑO	POZOS PERFORADOS
2001	106
2002	94
2003	113
2004	122
2005	139
2006	147
2007	100
2008	133
2009	163
2010	184
2011	196
2012	282
2013	349
2014	339
2015	206
2016	97
2017	111
2018	172
2019	157
2020	63
2021	109
2022	162
2023	128
<b>2024* (Hasta Febrero 19/2024)</b>	<b>17</b>



Elaborado por:

Jorge Rosas [jrosasw1992@hotmail.com](mailto:jrosasw1992@hotmail.com)

Cel: + 593 9 8 7200446

\* Este cuadro está basado en información recolectada a través de las distintas compañías de servicio y operadoras, así como de los organismos gubernamentales respectivos. En cada año se consideran solo los pozos que hayan culminado el evento de perforación en ese período.

*Recordamos que se hacen todos los esfuerzos para que la información sea lo más fidedigna posible, sin embargo, no podemos garantizar su infalibilidad. También deslindamos responsabilidad del uso posterior que se haga a esta recopilación de información.*

**POZOS PERFORADOS EN ECUADOR 2024** \* Información recopilada por Jorge Rosas W. [jrosasw1992@hotmail.com](mailto:jrosasw1992@hotmail.com) +593 9 87200446

No.	OPERADORA	POZOS	BLOQUE	CONFIGURACION DEL POZO	CLASIFICACION	PROFUNDIDAD TOTAL (MD/TVD)	FECHA INICIO (DD-MM-AAAA)	FECHA LEGA A PT (DD-MM-AAAA)	RIG	DIRECCIONAL	LODOS	SOLIDO CONTROL & WATER MANAGEMENT	BROCAS	MUDLOGGING	CEMENTACION	CORRIDA DE CASING	MARTILLOS	LINER HANGER	REGISTROS OPEN HOLE	CABEZALES	OPERACIONES DE PERFORACION Y REPERFORACION	OPERACIONES DE PERFORACION Y REPERFORACION	OPERACIONES DE PERFORACION Y REPERFORACION
1	ANDES PETROLEUM	JOHANNA ESTE 72	62	TIPO J	DESARROLLO	9236 / 8562	06-02-24	17-02-24	TUSCANY 117	HALL	SLB	CONL	HALL	CONL	HALL	MISSION PETROLEUM	SLB	TIW (DrillQup)		MISSION PETROLEUM			
2	ANDES PETROLEUM	JOHANNA ESTE 73	62	TIPO J	DESARROLLO		18-02-24		TUSCANY 117	HALL	SLB	CONL	HALL	CONL	HALL	MISSION PETROLEUM	SLB	TIW (DrillQup)		MISSION PETROLEUM			
3	ENAP	MDC 65	46	TIPO J	DESARROLLO	10475 / 10093	09-01-24	02-02-24	TUSCANY 117	SLB	SLB	SLB	SLB	SLB	SLB	EXPRO-FORMER FRANK'S INTL	ADRIALPETRO	HALL	SLB (LWD)	MISSION PETROLEUM		BES	SLB
4	ENAP	MDC 66	46	TIPO J	DESARROLLO		12-02-24		TUSCANY 117	SLB	SLB	SLB	SLB	SLB	SLB	EXPRO-FORMER FRANK'S INTL	ADRIALPETRO	HALL		MISSION PETROLEUM			
5	ENAP	INCHI E17	47	TIPO J MODIFICADA	DESARROLLO	12607 / 10135	07-01-24	29-01-24	NCA TUBO (SINIA PETREX 5924)	HALL	HALL	HALL	HALL	DATALOG	HALL	MISSION PETROLEUM	ADRIALPETRO	HALL		MISSION PETROLEUM		BES	SLB
6	ENAP	INCHI E18	47	TIPO J	DESARROLLO		12-02-24		NCA TUBO (SINIA PETREX 5924)	HALL	HALL	HALL	HALL		HALL	MISSION PETROLEUM	ADRIALPETRO	HALL		MISSION PETROLEUM			
7	CONSORCIO FRONTERA GEOPARK BLOQUE PERICO	PERICO NORTE A5	88	TIPO J	AVANZADA	11550 / 10257	25-01-23	16-02-24	TUSCANY 119	HALL	HALL	HALL	HALL	EXLOG	HALL	MISSION PETROLEUM	ADRIALPETRO	SLB	HALL (LWD)	MISSION PETROLEUM		BES	BAKER (FLEX 100)
8	ORION ENERGY	RON 10	54	TIPO J	DESARROLLO	11091 / 9973	01-12-23	10-01-24	SINOPEC 183	SLB	SLB	SLB	SLB	SLB	SLB	MISSION PETROLEUM	SLB	TIW (DrillQup)	SLB	MISSION PETROLEUM		BES	SLB (RC 10000)
9	PCR ENERGY	VHR SUR 02	90	TIPO S	EXPLORATORIO	8370 / 8166	18-12-23	06-01-24	CCDC 36	SLB	SLB	SLB	SLB	SLB	SLB	TIW (DrillQup)	SLB	TIW (DrillQup)	SLB	MISSION PETROLEUM			
10	PCR ENERGY	VHR SUR 03 S11	90	TIPO J EXTENDIDO	EXPLORATORIO		08-01-24		CCDC 36	SLB	SLB	SLB	SLB	SLB	SLB	TIW (DrillQup)	SLB	TIW (DrillQup)	SLB	MISSION PETROLEUM			
11	EP PETROECUADOR	ISHPINGO B063 (ISHB063)	43	TIPO J	DESARROLLO	6260 / 5793	31-12-22	19-01-24	CCDC 28	SLB	CCDC	SINOPEC	ULTERRA	PETROLEUM	HALL	SINOPEC (CASING TEAM)	VES SURVEY	TIW (DrillQup)	SLB (LWD)	MISSION PETROLEUM		BES	BAKER (FLEX 4)
12	EP PETROECUADOR	ISHPINGO B052 (ISHB052)	43	TIPO J	DESARROLLO		17-08-23	SUSPENSIÓN TEMPORAL DE PERFORACIÓN	CCDC 28	SLB	CCDC	SINOPEC	SLB	PETROLEUM	CCDC	SINOPEC (CASING TEAM)		TIW (DrillQup)		MISSION PETROLEUM			
13	EP PETROECUADOR	ISHPINGO B054 (ISHB 054)	43	TIPO J	DESARROLLO	8490 / 5621	26-12-23	18-01-24	CCDC 28	SLB	CCDC	SINOPEC	SLB	CONL	CCDC	SINOPEC (CASING TEAM)		TIW (DrillQup)		MISSION PETROLEUM		BES	BAKER (P35)
14	EP PETROECUADOR	ISHPINGO B024 (ISHB 024)	43	TIPO J	DESARROLLO	7085 / 5628	19-12-23	06-02-24	SINOPEC 185	SLB	SINOPEC	SINOPEC	SLB	PETROLEUM	DRELCOTEC	SINOPEC (CASING TEAM)		TIW (DrillQup)		MISSION PETROLEUM		BES	BAKER (L 3000)
15	EP PETROECUADOR	ISHPINGO B043H (ISHB 043H)	43	HORIZONTAL	DESARROLLO	9300 / 4885	27-12-23	25-01-24	SINOPEC 185	HALL	SINOPEC	SINOPEC	SLB	CONL	HALL	SINOPEC (CASING TEAM)		TIW (DrillQup)		MISSION PETROLEUM		BES	BAKER (FLEX 100)
16	EP PETROECUADOR	GACELA H018 (GCLH 010)	60	TIPO J	DESARROLLO		23-01-23		SINOPEC 191	SLB	SINOPEC	SINOPEC	CONL	EXLOG	DRELCOTEC	SINOPEC (CASING TEAM)		HALL		MISSION PETROLEUM		BES	BAKER
17	EP PETROECUADOR	SACHA A190 (SCHA 190)	60	TIPO J REENTRY	DESARROLLO	10407 / 10065	29-12-23	15-01-24	SINOPEC 219	HALL	HALL	HALL	HALL	EXLOG	HALL	MISSION PETROLEUM		HALL		MISSION PETROLEUM		BES	BAKER (L1000-10100)
18	EP PETROECUADOR	SACHA A608 (SCHA 608)	60	TIPO J	DESARROLLO		31-01-24		SINOPEC 219	HALL	HALL	HALL	HALL	EXLOG	HALL	MISSION PETROLEUM		HALL		MISSION PETROLEUM			
19	EP PETROECUADOR	SACHA AL544 (SCHAL 544)	60	TIPO J	DESARROLLO	11268 / 10181	12-01-24	28-01-24	SINOPEC 248	SLB	SINOPEC	SINOPEC	SLB	SINOPEC	SLB	SINOPEC (CASING TEAM)		HALL		MISSION PETROLEUM		BES	BAKER (FLEX 10)
20	EP PETROECUADOR	SACHA AL542 (SCHAL 542)	60	TIPO J	DESARROLLO		11-02-24		SINOPEC 248	SLB	SINOPEC	SINOPEC	CONL	SLB	SLB	SINOPEC (CASING TEAM)		HALL		MISSION PETROLEUM			
21	EP PETROECUADOR	SACHA AR590 (SCHAR 500)	60	TIPO J	DESARROLLO		01-02-24		SINOPEC 156	SLB	SINOPEC	SINOPEC	CONL	SLB	HALL	SINOPEC (CASING TEAM)		HALL		MISSION PETROLEUM			
22	EP PETROECUADOR	SACHA AQ665 (SCHAQ 605)	60	TIPO J	DESARROLLO				SINOPEC 129	BAKER	SINOPEC	SINOPEC	CONL	SINOPEC	SLB	SINOPEC (CASING TEAM)		HALL		MISSION PETROLEUM			
23	EP PETROECUADOR	WAPONI A022 (WPNA 002)	60	TIPO S	EXPLORATORIO	10063 / 8947	14-12-23	13-01-24	NCA TUBO (SINIA PETREX 20)	HALL	HALL	HALL	HALL	EXLOG	HALL	TIW (DrillQup)	ADRIALPETRO	HALL		MISSION PETROLEUM			
24	EP PETROECUADOR <sup>1</sup>	AUCA K189H (ACAK 189H)	61	HORIZONTAL	DESARROLLO	13742 / 9714	19-12-23	13-01-24	SLR 401	SLB	SLB	SLB	SLB	SLB	SLB	TIW (DrillQup)	SLB	TIW (DrillQup)	SLB (LWD)	SLB (CAMERON)		BES	SLB (S400N)
25	EP PETROECUADOR <sup>1</sup>	AUCA K247 (ACAK 247)	61	TIPO J	DESARROLLO	13860 / 10177	24-01-23	18-02-24	SLR 401	SLB	SLB	SLB	SLB	SLB	SLB	TIW (DrillQup)	SLB	TIW (DrillQup)	SLB (LWD)	SLB (CAMERON)			
26	EP PETROECUADOR <sup>1</sup>	AGUARICO A035 (AGRA035)	57	TIPO J	DESARROLLO	10125 / 9589	06-01-24	20-01-24	SLR 402	SLB	SLB	SLB	SLB	SLB	SLB	EXPRO-FORMER FRANK'S INTL	SLB	TIW (DrillQup)	SLB (LWD)	SLB (CAMERON)		BES	RC D4000N
27	EP PETROECUADOR <sup>1</sup>	AGUARICO A041 (AGRA041)	57	TIPO J	DESARROLLO		07-02-24		SLR 402	SLB	SLB	SLB	SLB	SLB	SLB	EXPRO-FORMER FRANK'S INTL	SLB	TIW (DrillQup)	SLB (LWD)	SLB (CAMERON)			
28	EP PETROECUADOR <sup>1</sup>	VINITA D038 (VNTD 038)	59	TIPO J MODIFICADO	DESARROLLO	6083 / 7943	07-01-24	24-01-24	TRIBOILGAS 202	INTREPID	BAKER	BAKER	ULTERRA	SLB	SLB	TIW (DrillQup)	PPP	TIW (DrillQup)	SLB	MISSION PETROLEUM		BES	BAKER (FLEX 17)

1. Para suministrar servicios en esta área, SHAYA ECUADOR S.A. ha firmado un contrato con Petroamazonas EP.  
 2. Para suministrar servicios en esta área, Concesionario SINOPEC ha firmado un contrato con Petroamazonas EP.  
 3. Para suministrar servicios en esta área (Bilanca - Vinita), TRIBOILGAS ha firmado un contrato con Petroamazonas EP.